

The State Trails Program is actively working with other state and federal land management agencies to identify Designated/Enrolled ORV roads, trails, and open riding areas.

PLEASE CONTACT THE LOCAL FOREST SERVICE AND BLM OFFICES FOR INFORMATION REGARDING ROADS, TRAILS, AND AREAS DESIGNATED FOR ORV USE.

State Parks staff may also have information about ORV roads and trails in the vicinity of their state park.

Please contact the local land manager for more information regarding winter or other seasonal restrictions. This map is intended for spring, summer, and fall ORV season only.

Any signing or closed gates on-the-ground take precedence over any designations marked on this ORV map.

This Map is intended for use in the 2021ORV season ONLY. Designated/Enrolled ORV roads and trails may change from year-to-year and it is important that you contact the local land managers for the most recent ORV enrollments. For more information call 307-777-6323 or visit a local USDA Forest Service office.

**THIS MAP IS FOR REFERENCE ONLY. IT IS YOUR RESPONSIBILITY TO OBTAIN AND CARRY A CURRENT TRAVEL MANAGEMENT MAP OR MOTOR VEHICLE USE MAP FROM THE LAND MANAGING AGENCY. IT IS ALSO YOUR RESPONSIBILITY TO KNOW AND FOLLOW ALL CURRENT TRAVEL REGULATIONS AND RESTRICTIONS.**



#### ORV Rules and Regulations Quick Easy Chart

Land Management Designation	ORV Decal		License Plate		Driver's License		Driver's License Endorsement		Proof of Insurance	
	No	Yes	No	Yes	Yes	Yes	Yes	Yes	Yes	Yes
Roads Not Enrolled	No	Yes	No	Yes	Yes	Yes	Yes	Yes	Yes	Yes
Roads, Routes Enrolled	Decal or License Plate	Decal or License Plate	Yes	Motorcycles Only if Plated	Motorcycles Only if Plated	Only if ORV is Plated	Motorcycles required if plated; ATV/MPV Advised	Motorcycles required if plated; ATV/MPV Advised	Motorcycles required if plated; ATV/MPV Advised	Motorcycles required if plated; ATV/MPV Advised
Trails Enrolled (50" or less)	Yes	No	No	No	No	No	Advised	Advised	Advised	Advised

#### Age and Education Requirements

Operators that do not have a drivers license or permit (normally those 15 years old and under) can operate an ORV only on designated/enrolled trails, designated riding areas, and private property with permission. Operators over the age of 14 years with proper drivers license endorsement can ride on roads, routes, trails that are designated for ORV travel, and non-designated roads if the ORV is street legal. It is highly recommended that an adult accompany youth under 18 years of age while they ride. ORV operators should never ride alone, regardless of age.

#### Equipment Requirements

- All ORVs are required to have certain equipment in working order while operating on public lands in Wyoming, including:
- Brakes sufficient to stop and hold the ORV.
  - A headlight and tail light while operating between sunset and sunrise.
  - Some land management agencies require a bright colored flag attached to the ORV, extending eight feet from the ground while operating on designated sand dunes areas.
  - A muffler which does not exceed 102 decibels with an approved spark arrestor.

#### Prohibited Uses/Behavior

It is unlawful for any person to use an ORV in connection with acts of vandalism, harassment of wildlife or domestic animals, or in commission of a crime. It is also unlawful for anyone to operate any ORV in such a manner to cause resource damage; which can be defined as, but not limited to, damage to the environment by excessive pollution of air, water, or land, abuse of watersheds, impairment of plant or animal life, or the creation of excessive noise.

#### Public Land Manager Contacts

USDA Forest Service		Ranger District Offices
Shoshone National Forest	808 Meadow Lane Cody, WY 82414 (307) 527-6241	Washakie, WY (307) 332-5460 Wind River, WY (307) 455-2466 Clarks Fork, WY (307) 527-6241 Greybull, WY (307) 527-6921 Wapiti, WY (307) 527-6921

#### Bureau of Land Management

Wyoming State Office  
5353 Yellowstone Road  
P.O. Box 1828  
Cheyenne, WY 82003  
(307) 775-6256

Cody Field Office  
1002 Blackburn  
Cody, WY 82414  
(307)578-5900

#### Wyoming Game & Fish Department

Headquarters  
5400 Bishop Boulevard  
Cheyenne, WY 82006  
(307) 777-4600

#### More Information

For a directory of area businesses, ORV dealers, riding tips and safety issues, trail conditions, and other on trail attractions, visit [www.wyotrails.com](http://www.wyotrails.com).



ORV Definitions

**Off-Road Vehicle (ORV)** – Any recreational vehicle type 1, unlicensed motorcycle type 2, multi-wheeled motorized vehicle type 3, ORV Definition per Wyoming Statute WS 31-1-101 (K):

**Type 1:** “A recreational vehicle primarily designed for off-road use which is sixty-four (64) inches or less in width, and has an unladen weight of one thousand one hundred (1,100) pounds or less; (Effective July 1, 2011).”

**Type 2:** “Any unlicensed motorcycle which has an unladen weight of six hundred (600) pounds or less and is designed to be ridden off road with the operator astride upon a seat or saddle and travels on two (2) tires.”

**Type 3:** “Any multi-wheeled motorized vehicle not required by law to be licensed and is designed for cross-country travel on or over land, sand, snow, ice or other natural terrain and which has an unladen weight of more than nine hundred (900) pounds.”

Roads & Trails Designation/Enrollment Rules & Regulations

**ROADS** - That are not designated by land managers for Off-Road Vehicle travel, and are NOT ENROLLED in the trails program:

**I.** Generally should have a current license plate and be Street Legal (headlamp, tail light, brake light, red rear reflector, horn, left hand rear view mirror). *Wy. Statutes:* WS 31-1-101 (A)(xv) ; WS 31-2-201 ; WS 31-2-204 (a) WS 31-5-901 through WS 31-5-970 ; WS 31-5-124 ; WS 31-5-1601

**II.** The operator must have a valid driver's license, with proper endorsement, and have proof of insurance. *Note: “Endorsement ‘M’ is required for motorcycle operators if motorcycle is plated.” Wy. Statutes:* WS 31-5-124 (a)(i)(C) ; WS 31-2-201 (h) ; WS 31-5-1601 ; WS 31-7-109(f)

**III.** Motorcycle operators and riders under 18 years old by law must wear an approved helmet if motorcycle is plated. ATV/MPV operators and riders are strongly advised to wear helmets. *Wy. Statutes:* WS 31-5-124 (a)(i)(B)

*Note: All ORVs that can not achieve the maximum posted speed shall be required to have a slow moving vehicle emblem, and be operated to the extreme right hand side. Wy. Statute:* WS 31-5-124 (C)(b)(ii),(iii)

**ROADS and or TRAVEL ROUTES** – That are designated by land managers for Off-Road Vehicle travel, and are ENROLLED in the program:

**I.** All ORVs must display a current State of Wyoming ORV registration decal. *Wy. Statute:* WS 31-2-703 (a) ; WS 31-2-702 ; WS 31-5-1601

**II.** The operator must have a valid driver's license with proper endorsement. *Note Again: “Endorsement ‘M’ is required for motorcycle operators if motorcycle is plated.” Wy. Statutes:* WS 31-5-124 (a)(i)(C) ; WS 31-2-201 (h) ; WS 31-5-1601 ; WS 31-7-109(f)

**III.** Motorcycle operators and riders under 18 years old by law must wear an approved helmet if motorcycle is plated. ATV/MPV operators and riders are strongly advised to wear helmets. *Wy. Statute:* WS 31-5-124 (a)(i)(B)

OR

**I.** The ORV should have a current license plate. The operator must have a valid driver's license with proper endorsement, and have proof of insurance. *Note Again: “Endorsement ‘M’ is required for motorcycle operators if motorcycle is plated.” Wy. Statutes:* WS 31-5-124 (a)(i)(C) ; WS 31-2-201 (h) ; WS 31-5-1601 ; WS 31-7-109(f)

**II.** Motorcycle operators and riders under 18 years old by law must wear an approved helmet if motorcycle is plated. ATV/MPV operators and riders are strongly advised to wear helmets. *Wy. Statute:* WS 31-5-124 (a)(i)(B)

*All ORV travel must remain on enrolled roads/travel routes.” Tread Lightly!”*

*Note: When operating at any time from one-half (1/2) hour after sunset to one-half (1/2) hour before sunrise, the ORVs shall be equipped with a working headlamp, tail light and working brake light. Wy. Statute:* WS 31-5-1601 (a) (iii)

**TRAILS 50 inches or less** - That are designated by land managers for Off-Road Vehicle Travel, and are ENROLLED in the program:

**I.** All ORVs must display a current State of Wyoming ORV decal, regardless if the ATV/MPV or Motorcycle has a current license plate. *Wy. Statutes:* WS 31-2-703 (a) ; WS 31-2-702 ; WS 31-5-1601

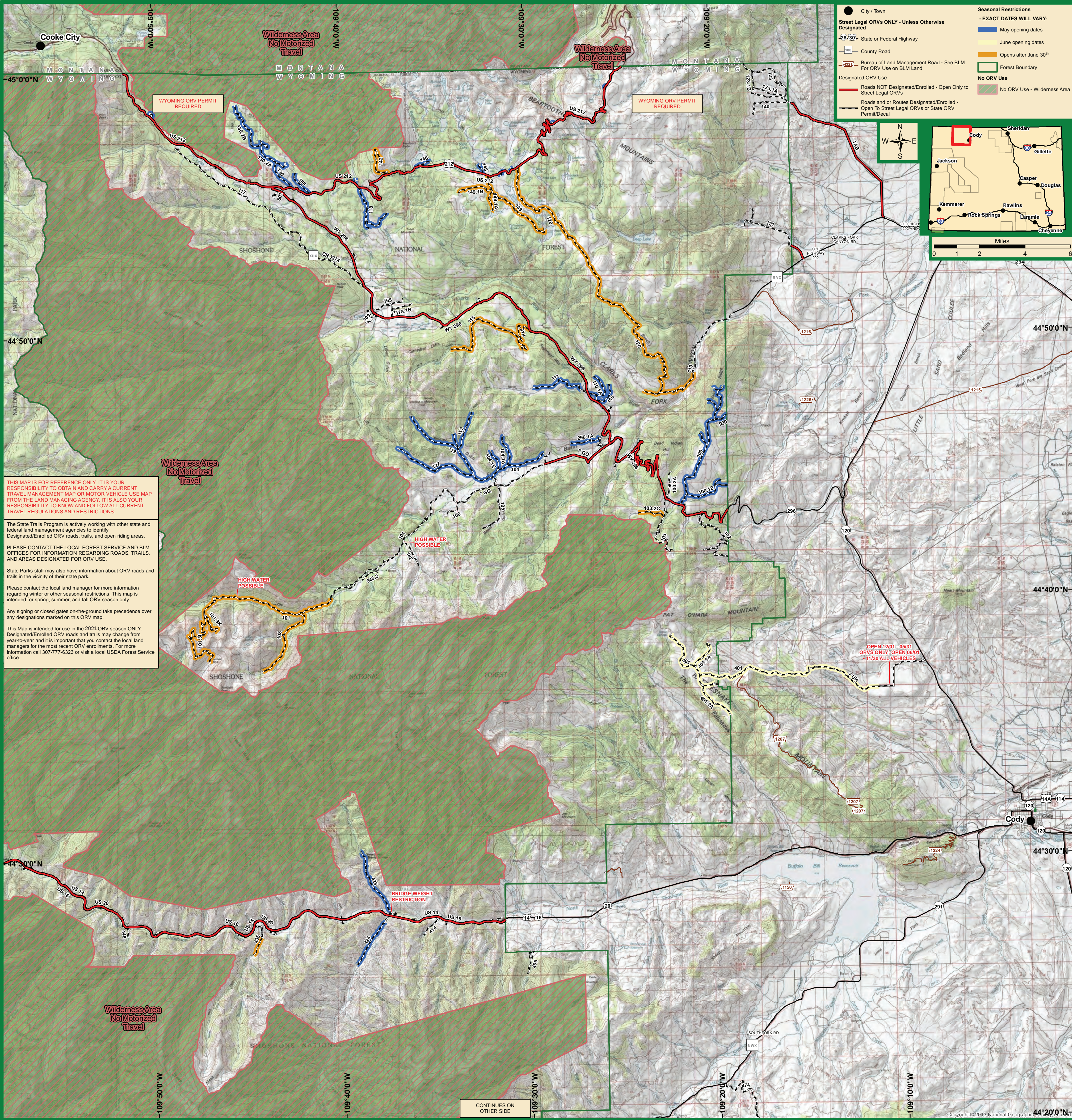
**II. Motorcycle** operators and riders under 18 years old by law must wear an approved helmet if motorcycle is plated. ATV/MPV operators and riders are strongly advised to wear helmets. *Wy. Statute:* WS 31-5-124 (a)(i)(B)

*All ORV travel must remain on enrolled trails. Note: Federal land policy defines ORV trails as being no greater than 50 inches in width; Therefore, ORVs that are greater than 50 inches will not be allowed to travel on Wyoming designated trails. All ORVs must be equipped with a muffler with an approved spark arrester when operated on both trails and roads. Wy. Statute:* WS 31-5-1601(a)(v)(A,B)

**An ORV must be registered.**

- BLM roads within the state are considered open for ORV use.
- A Wyoming State ORV Permit or a license plate is required on BLM lands.
- If a vehicle is licensed in a state other than Wyoming, a Wyoming registration sticker is required.

WYOMING SEARCH & RESCUE
   
For information or to donate:
   
<http://wysar.state.wy.us>
  
(307) 777-4900
   
 The next person saved could be you or someone you love.



Respectful Rider's Ethics “Tread Lightly! Pledge”

**Travel Responsibly** on designated roads and trails or in permitted areas.

**Respect the Rights of Others** including private property owners and all recreational trail users, campers and others to allow them to enjoy their recreational activities undisturbed.

**Educate Yourself** by obtaining travel maps and regulations from public agencies, planning for your trip, taking recreation skills classes, and knowing how to use and operate your equipment safely.

**Avoid Sensitive Areas** such as meadows, lakeshores, wetlands and streams, unless on designated routes. This protects wildlife habitat and sensitive soils from damage.

**Do Your Part** by leaving the area better than you found it, properly disposing of waste, minimizing the use of fire, avoiding the spread of invasive species, restoring degraded areas, and joining a local enthusiast organization.