

ORV Definitions

Off-Road Vehicle (ORV) – Any recreational vehicle type 1, unlicensed motorcycle type 2, multi-wheeled motorized vehicle type 3, ORV Definition per Wyoming Statute WS 31-1-101 (K):

Type 1: “A recreational vehicle primarily designed for off-road use which is sixty-four (64) inches or less in width, and has an unladen weight of one thousand one hundred (1,100) pounds or less; (Effective July 1, 2011).”

Type 2: “Any unlicensed motorcycle which has an unladen weight of six hundred (600) pounds or less and is designed to be ridden off road with the operator astride upon a seat or saddle and travels on two (2) tires.”

Type 3: “Any multi-wheeled motorized vehicle not required by law to be licensed and is designed for cross-country travel on or over land, sand, snow, ice or other natural terrain and which has an unladen weight of more than nine hundred (900) pounds.”

Roads & Trails Designation/Enrollment Rules & Regulations

ROADS - That are not designated by land managers for Off-Road Vehicle travel, and are NOT ENROLLED in the trails program:

I. Generally should have a current license plate and be Street Legal (headlamp, tail light, brake light, red rear reflector, horn, left hand rear view mirror). *Wy. Statutes:* WS 31-1-101 (A)(xv) ; WS 31-2-201 ; WS 31-2-204 (a) WS 31-5 901 through WS 31-5-970 ; WS 31-5-124 ; WS 31-5-1601

II. The operator must have a valid driver's license, with proper endorsement, and have proof of insurance. *Note: “Endorsement ‘M’ is required for motorcycle operators if motorcycle is plated.”* *Wy. Statutes:* WS 31-5 124 (a)(i)(C) ; WS 31-2-201 (h) ; WS 31-5-1601 ; WS 31-7-109(f)

III. Motorcycle operators and riders under 18 years old by law must wear an approved helmet if motorcycle is plated. ATV/MPV operators and riders are strongly advised to wear helmets. *Wy. Statutes:* WS 31- 5-124 (a)(i)(B)

Note: All ORVs that can not achieve the maximum posted speed shall be required to have a slow moving vehicle emblem, and be operated to the extreme right hand side. Wy. Statute: WS 31-5-124 (C)(b)(ii),(iii)

ROADS and or TRAVEL ROUTES – That are designated by land managers for Off-Road Vehicle travel, and are ENROLLED in the program:

I. All ORVs must display a current State of Wyoming ORV registration decal. *Wy. Statute:* WS 31-2-703 (a) ; WS 31-2-702 ; WS 31-5-1601

II. The operator must have a valid driver's license with proper endorsement. *Note Again: “Endorsement ‘M’ is required for motorcycle operators if motorcycle is plated.”* *Wy. Statutes:* WS 31-5 124 (a)(i)(C) ; WS 31-2-201 (h) ; WS 31-5-1601 ; WS 31-7-109(f)

III. Motorcycle operators and riders under 18 years old by law must wear an approved helmet if motorcycle is plated. ATV/MPV operators and riders are strongly advised to wear helmets. *Wy. Statute:* WS 31-5-124 (a)(i)(B)

OR

I. The ORV should have a current license plate. The operator must have a valid driver's license with proper endorsement, and have proof of insurance. *Note Again: “Endorsement ‘M’ is required for motorcycle operators if motorcycle is plated.”* *Wy. Statutes:* WS 31-5 124 (a)(i)(C) ; WS 31-2-201 (h) ; WS 31-5-1601 ; WS 31-7-109(f)

II. Motorcycle operators and riders under 18 years old by law must wear an approved helmet if motorcycle is plated. ATV/MPV operators and riders are strongly advised to wear helmets. *Wy. Statute:* WS 31-5-124 (a)(i)(B)

All ORV travel must remain on enrolled roads/travel routes.” Tread Lightly!”

Note: When operating at any time from one-half (1/2) hour after sunset to one-half (1/2) hour before sunrise, the ORVs shall be equipped with a working headlamp, tail light and working brake light. Wy. Statute: WS 31-5-1601 (a) (iii)

TRAILS 50 inches or less - That are designated by land managers for Off-Road Vehicle Travel, and are ENROLLED in the program:

I. All ORVs must display a current State of Wyoming ORV decal, regardless if the ATV/MPV or Motorcycle has a current license plate. *Wy. Statutes:* WS 31-2-703 (a) ; WS 31-2-702 ; WS 31-5-1601

II. Motorcycle operators and riders under 18 years old by law must wear an approved helmet if motorcycle is plated. ATV/MPV operators and riders are strongly advised to wear helmets. *Wy. Statute:* WS 31-5-124 (a)(i)(B)

All ORV travel must remain on enrolled trails. Note: Federal land policy defines ORV trails as being no greater than 50 inches in width; Therefore, ORVs that are greater than 50 inches will not be allowed to travel on Wyoming designated trails. All ORVs must be equipped with a muffler with an approved spark arrester when operated on both trails and roads. Wy. Statute: WS 31-5-1601(a)(v)(A,B)

An ORV must be registered.

- BLM roads within the state are considered open for ORV use.
- A Wyoming State ORV Permit or a license plate is required on BLM lands.
- If a vehicle is licensed in a state other than Wyoming, a Wyoming registration sticker is required.

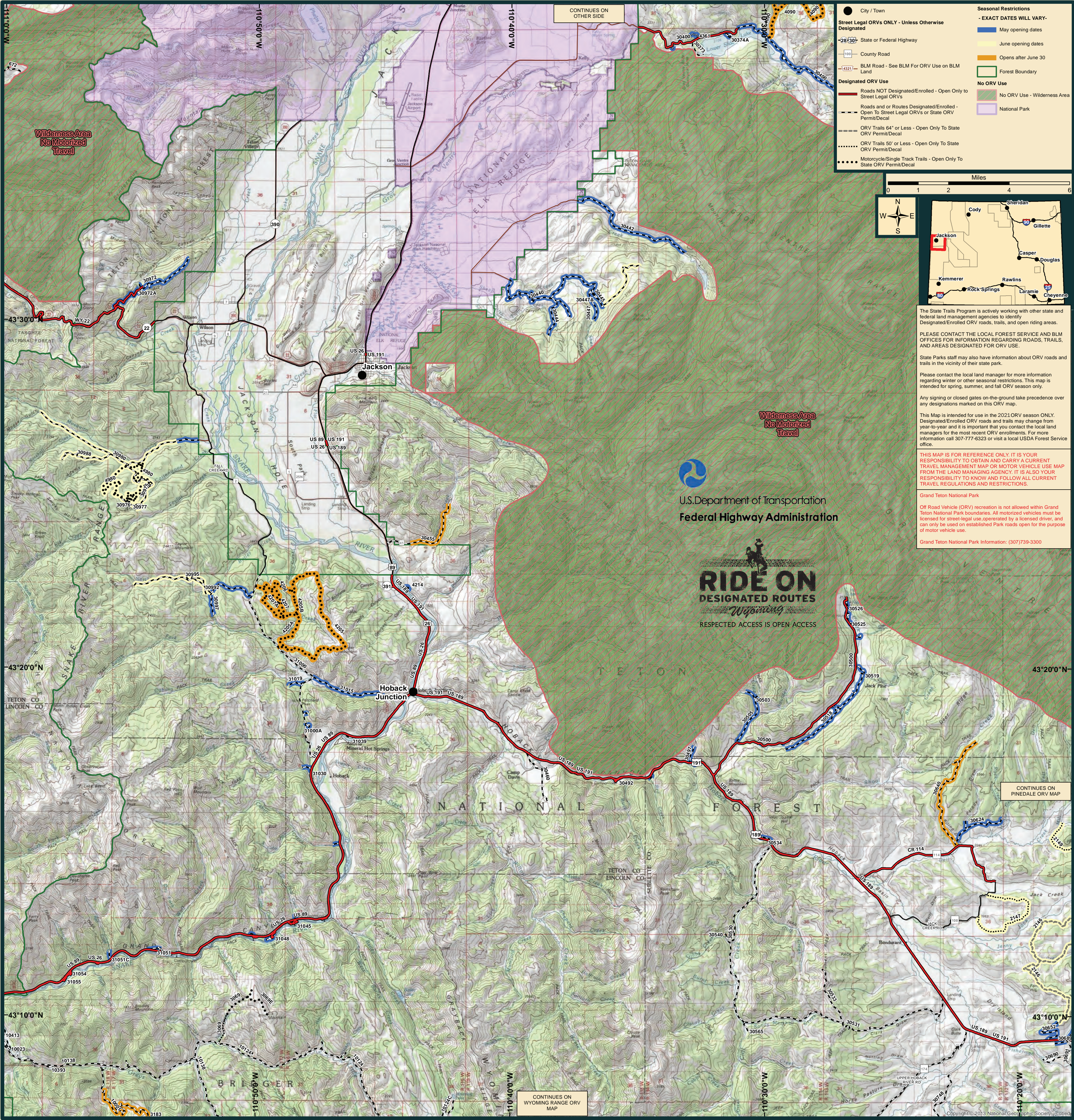
WYOMING SEARCH & RESCUE

For information or to donate:

http://wysar.state.wy.us

(307) 777-4900

 The next person saved could be you or someone you love.



Wyoming ORV maps are available online. View and download these maps by scanning this QR code:



Respectful Rider's Ethics “Tread Lightly! Pledge”

Travel Responsibly on designated roads and trails or in permitted areas.

Respect the Rights of Others including private property owners and all recreational trail users, campers and others to allow them to enjoy their recreational activities undisturbed.

Educate Yourself by obtaining travel maps and regulations from public agencies, planning for your trip, taking recreation skills classes, and knowing how to use and operate your equipment safely.

Avoid Sensitive Areas such as meadows, lakeshores, wetlands and streams, unless on designated routes. This protects wildlife habitat and sensitive soils from damage.

Do Your Part by leaving the area better than you found it, properly disposing of waste, minimizing the use of fire, avoiding the spread of invasive species, restoring degraded areas, and joining a local enthusiast organization.