

FIND SOMETHING UNEXPECTED



Your name:

BEAR RIVER STATE PARK

JUNIOR RANGER BOOK



Wyoming: *The Equality State*

Is there anything about Wyoming you know
that makes it different than other states?

Which state park are you visiting
today? _____

Can you mark it on the map?



State Mammal: American Bison



State Amphibian:
Tiger Salamander

Before it was even a state,
Wyoming was the first in the U.S.
to allow women the right to vote.

What year do you think that
happened? In your grandparents'
life? Your great-grandparents?



Wyoming has the U.S.'s
first National Park and
first National Monument -
can you name them?



State Bird:
Western Meadowlark
Wē-err-adze in Ute

People Have Relied on Animals in this Area for Centuries

Members of the Eastern Shoshone, Shoshone-Bannock, and Ute Tribes have lived in this area for thousands of years.

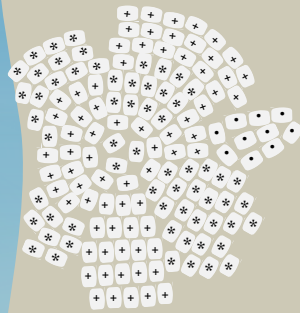
Starting in the early 1800s, bison were very important to the tribes. Bison was a main food source with fresh meat eaten in the summer and later dried out to last through the winter. Native People still eat bison and other game, but it is usually not their primary food as it was in the past.

Use this key to color in the beadwork on the moccasin to reveal a symbol of the Eastern Shoshone Tribe.

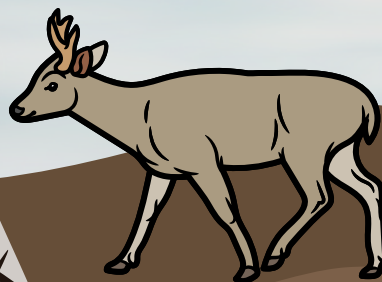
+ = red

* = dark red

. = green



Deer hide was historically used to create clothing and moccasins. Elk hides were predominately used to build tipis. Hide is still used in traditional clothing today.



Greater Sage Grouse

The Ute word for sage brush is säwb.

huuja - Eastern Shoshone for sage chicken

Sage grouse are like the wild chicken of the sage brush steppe - the name of this ecosystem with the sage brush plant. As their name says, they have a very special relationship with the plant! Their habitat is only in this area of the country where we have sagebrush. They even lay their eggs under it!



The dancing grounds where the males show off are called leks. Male grouse can take a gallon of air into their esophagus to use for their special display!

Like many birds, the colors of the females acts as camouflage and the males are bright and showy in the breeding season. The males fan out their starburst tails - can you think of another bird that does this?



Unscramble the terms about this cool species

Pages push berst _____

Elk _____

Are sous egg _____



What color do you think males have on their puffed out chests during breeding season?
Color the bird in. Can you draw their tracks?

Trout of Bear River

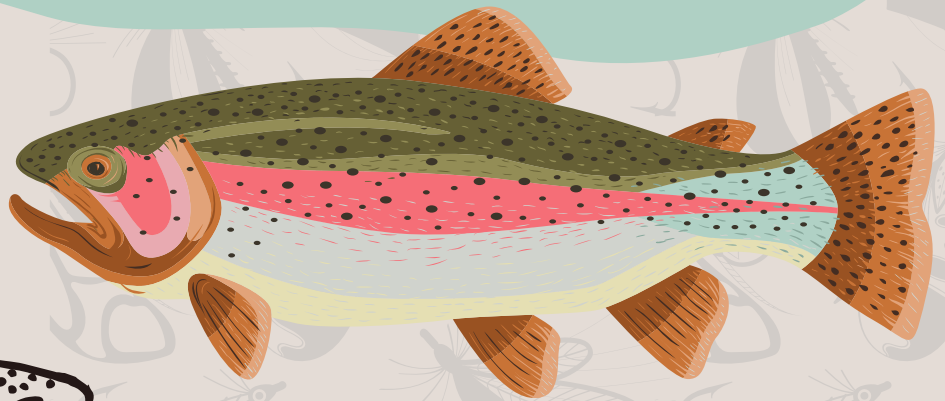
The Bear River has many fishes - brown trout and rainbow trout are two of them!



What do trout eat?

Do fly ties, the lure we use to catch fish, look like their prey?

Trout are speckled on top. If a predator, like an eagle, is looking into the river from above, the speckles (beneath moving water) help the fish camouflage with the pebbles of the river.



Rainbow trout get part of their orange or red color from the food they eat (the same reason a flamingo's feathers turn pink!). The flashy colors help the fish defend their feeding territory and also help males attract females in breeding season.

Can you color these trout as a brown trout, rainbow trout, or other trout of your choosing? How would they blend in from predators AND stand out to other trout?



Pang kwi -
Eastern Shoshone
for trout,
literally "good fish".
Att-um-päh-gär in Ute.



Animal Names

Animals have a common name and also a scientific name! Scientific names are rooted in Latin or Greek and act like a universal language for scientists all over the world. These scientific names are called binomials (two names) and have two parts, a genus and a species.



Sometimes binomials are really long and complicated, but other times they are easy. The scientific name for a Bison is Bison bison. Scientific names are italicized or underlined - can you spot some in the park or other places?

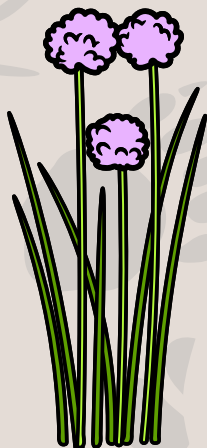
These songbirds love to sit on reeds in wetlands, look for them in the park. How would you "describe" this bird if you were giving it a common name?



How about this flower?

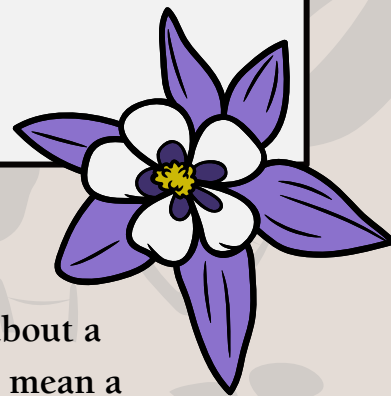


Draw what you think a fuzzy-horned bumblebee might look like:



What's a characteristic you might choose to highlight for a skunk? _____

Common names can be confusing! A visitor might ask about a whistle pig they saw, while another visitor will say, "you mean a woodchuck?" They're both talking about a yellow-bellied marmot, also called a rock chuck or land beaver! Have you met someone who calls things a different name than you do?

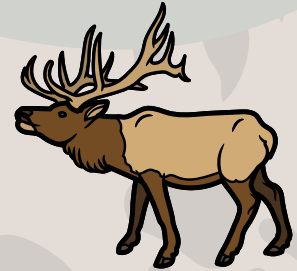


Signs of Animals

*Match the description
to the track, then
match the track to the
mammal shown!*

Tracks and scat (animal poop) can be clues an animal is around! When you see a track, think about how big it is and how much space there is between the tracks (this tells you about the animal's gait). Does it have claws or not? Felines, like bobcats, retract their claws. Is the scat full of fish scales (like an otter's) or does it have fur in it (like a coyote's)?

Beavers have front hands that help them hold onto their food source - what do they eat? Their back feet are webbed - why do you think?



Pronghorn are the fastest land animal in the U.S.! However, they prefer not to jump fences and often crawl under instead. Pronghorn tracks look much like a deer.



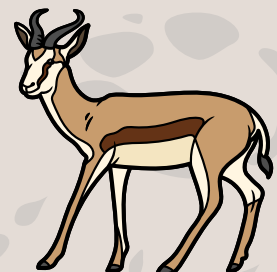
Raccoons have great little hands that help them get into everything! You'll often see their tracks in muddy banks - they seem to especially enjoy crawfish and mussels.



Elk tracks are larger and rounder than deer tracks. Females can weigh over 500 pounds and males over 700! Elk are one of the largest members of the deer family.



Otters have little feet with slight webbing. They eat fish almost exclusively, so their scat is especially stinky and full of scales. Otters also do a little poop dance!





Wyoming State Parks Junior Ranger Pledge

I pledge to preserve the past,
appreciate the present, and conserve
the future of Wyoming State Parks,
Historic Sites, and Trails, and in my
life at home and elsewhere.

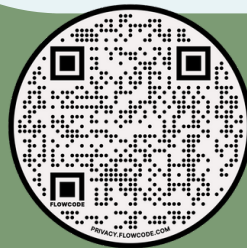
.....

Fort Bridger SHS

Sinks Canyon SP

South Pass City SHS

Seminole SP



Scan this QR code to learn
more and see answers!

Scan here for
feedback and contact:



Thank you to the Friends of Bear
River State Park for paying for the
printing of this book.

Complete all five of the district sites
for a special district level badge.

