



Bear River State Park



Bear River State Park would like to invite members of the public to provide input on the planned installation of PRIMITIVE TENT CAMPING at the park.

Bear River State Park is currently a day-use only park located in Evanston, Wyoming and would like to seek feedback from the public on the subject of adding 25 primitive tent camping sites in the park. The proposed sites would consist of three handicap accessible sites in the middle of the park, as well as three walk-in group sites and 19 individual walk-in tent sites at the southern end of the park. These sites would bring added revenue to the park and provide economic development to the City of Evanston and surrounding areas with lodging tax income, food, and fuel purchases; as well as providing tent camping locations throughout the busy summer tourism season. If you would like further details prior to attending the informational meeting listed at the above date and time, please feel free to contact the park headquarters office at (307)789-6547.



Bear River State Park (307) 789-6547



PROPOSED PRIMITIVE TENT CAMPING INFO



- 25 designated tent sites
- Tent campers must use the designated tent sites, no choosing at will areas
- Sites will be supplied with a picnic table, garbage can and fire pit. • Existing restrooms or port-a-johns will be nearby
- Primitive camping is classified as a site with no water or electrical amenities
- Sites will be walk-in only; campers will have to park their vehicle in a designated pre-existing area and pack their equipment in from the parking lot
- No RVs, camper vehicles, etc. are allowed
- Campers must reserve/pay for their site at the Visitor Center or with the camp host
- Camping rules and regulations are set by Wyoming State Parks and Cultural Resources; Bear River State Park will have the same criteria as other state parks with camping
- 22 of the sites are located at the south end of the park while three will be in the mid-area of the park at already established picnic sites for ADA accessibility if approved
- There will be a camp host located on the park to help with camping rules and regulations, fees, questions, tent site maintenance, etc.
- Camping season would be proposed as May 15th – Sept. 15th
- The park will still close for day use at 10:00pm.
- There will be no camping allowed during Mountain Man Rendezvous in August
- There is no free camping, campers will have to pay a daily camping fee
- There is a maximum of 14 consecutive days of camping



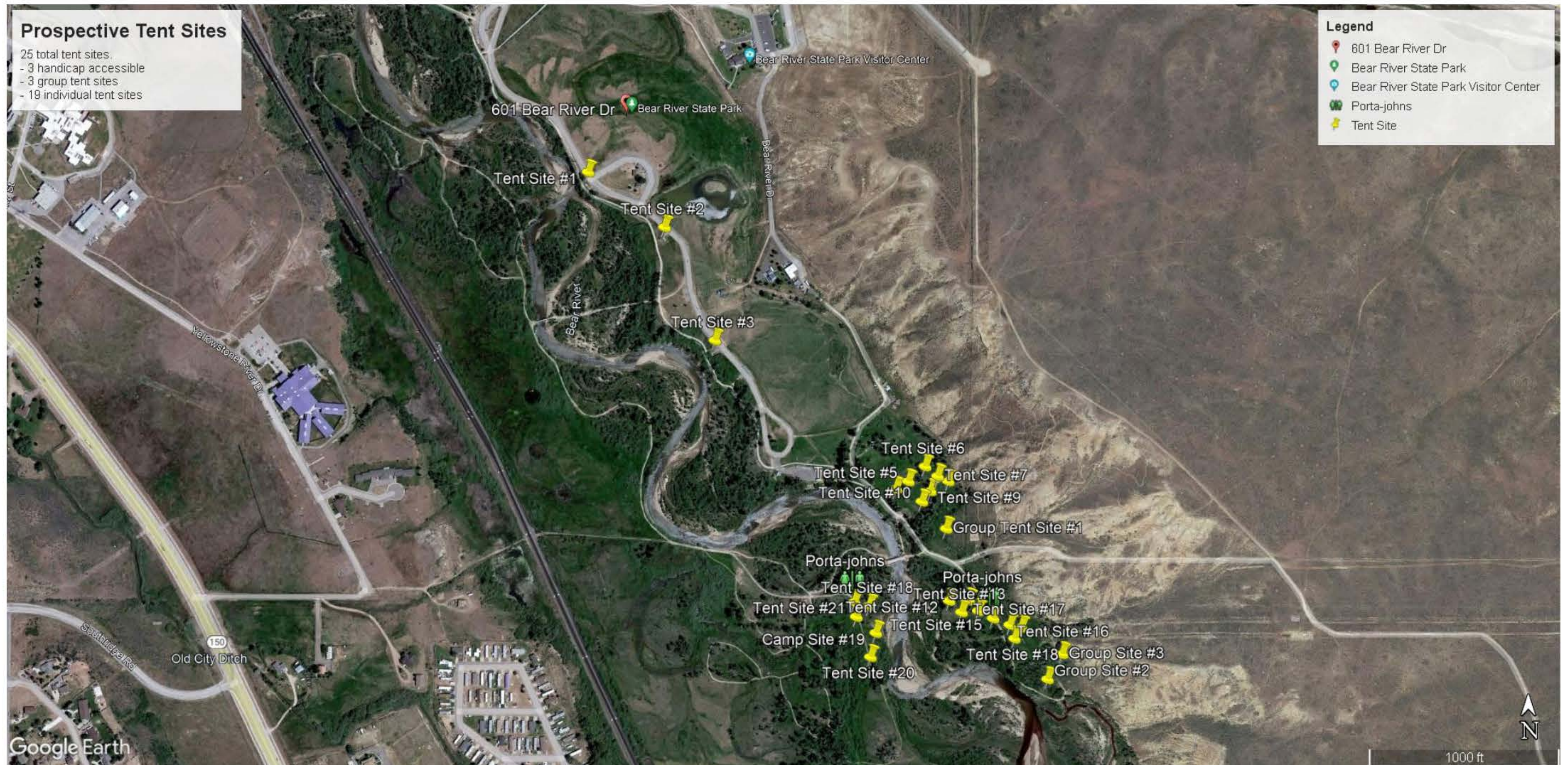
Bear River State Park (307) 789-6547



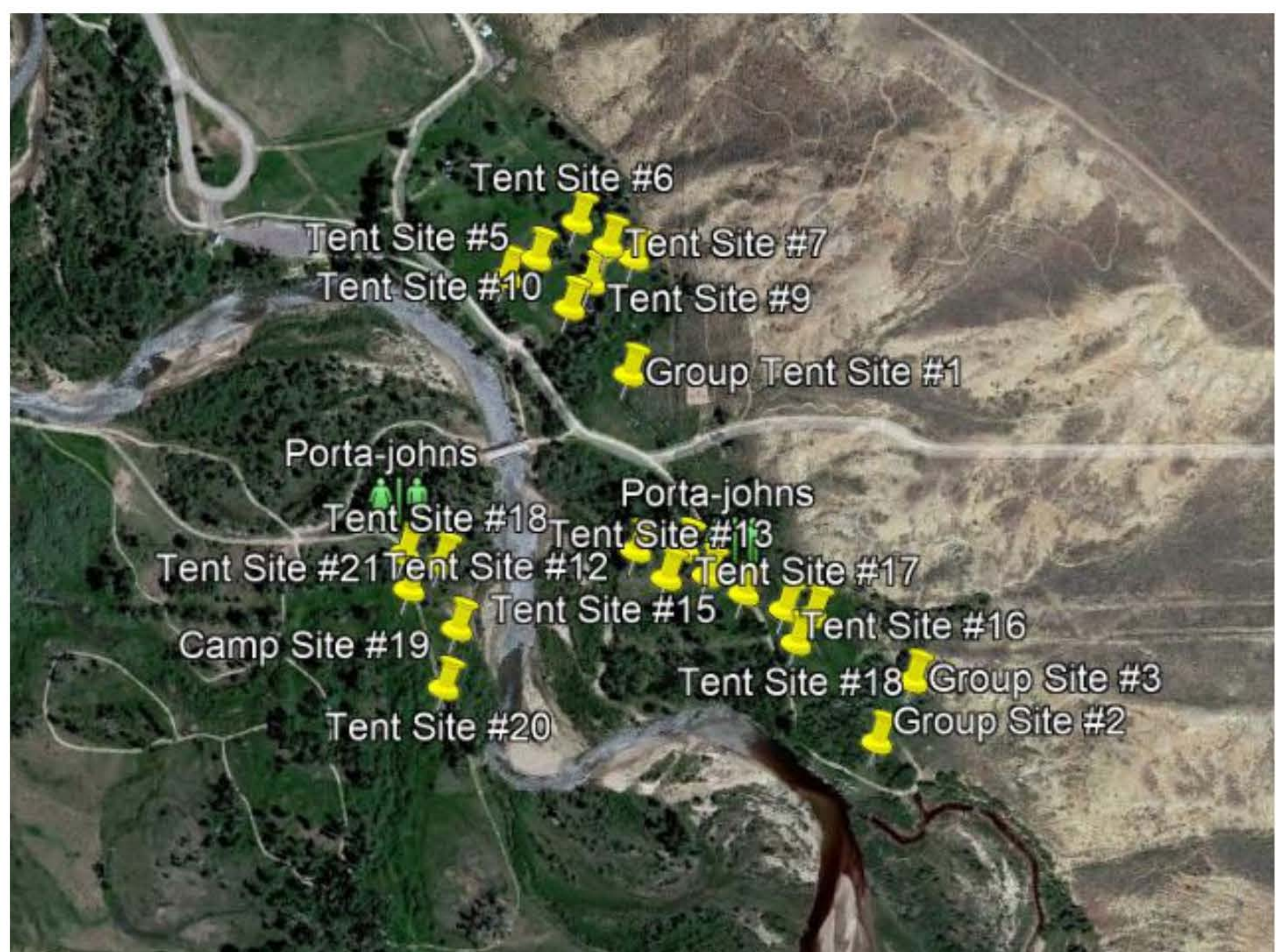
Bear River State Park Proposed Primitive Tent Camping

Primitive tent camping has a small impact on the landscape as there is no water or electric. Campers will use pre-existing infrastructure on site.

Each spot will have a fire ring to delineate the area.



Wide view of all proposed sites and zoomed in view of main are of proposed primitive tent camping sites.



Bear River State Park (307) 789-6547

ADA Sites

Write a description for your map.

Tent Site #1

Tent Site #2

Tent Site #3

Legend
Tent Site

Bear River

Bear River Dr

Google Earth

400 ft



Rendezvous Area Sites

Write a description for your map.

Legend
Tent Site

- Tent Site #4
- Tent Site #5
- Tent Site #6
- Tent Site #7
- Tent Site #8
- Tent Site #9
- Tent Site #10
- Group Tent Site #1

200 ft



Hospital Camp Sites


Write a description for your map.


Legend


 Tent Site

Tent Site #12 


Tent Site #11 


Tent Site #13 

Tent Site #14 

Tent Site #15 

Tent Site #16 

Tent Site #18 

Tent Site #17 

Porta-johns 

Group Site #3 

Group Site #2 

West Side of River Sites

Write a description for your map.

Porta-Johns



Tent Site #22



Tent Site #18



Tent Site #21



Camp Site #19



Tent Site #20



Legend



Tent Site



200 ft