

FIND SOMETHING UNEXPECTED



Your name:

SINKS CANYON STATE PARK

JUNIOR RANGER BOOK

One Canyon, Three Ecosystems

ayaporeng



Check out the Eastern Shoshone names for many animals in this book! Add the English name if you learn it from a sign or staff person.

gini



Abiotic (non-living) factors like the sun and water make a big difference in any ecosystem, but it is especially clear here in the canyon!

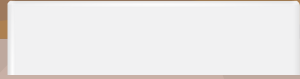
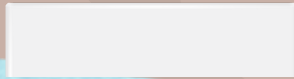
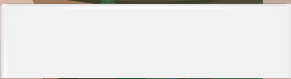
Check out the view in the canyon. Can you label the following ecosystems in the white boxes? If you need some clues, ask a park employee!

SHADY SIDE

SUNNY SIDE

POPO AGIE RIVER

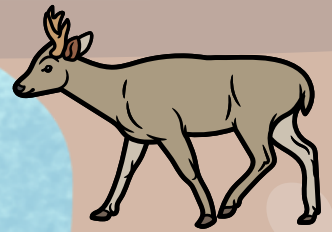
dogoa



Did you see any other animals at the park - from insects to small mammals to big birds of prey? Draw them in where you saw them or where you think they might live.

Which side of the canyon do you think has more plants? Why?

duu teheyaN



baganduru



dza pêngkwi

Rock Art

Oral traditions are stories passed down through many years. There is oral tradition that people have been coming through this canyon for thousands of years - in addition to physical evidence. Rock art is one piece of physical evidence.

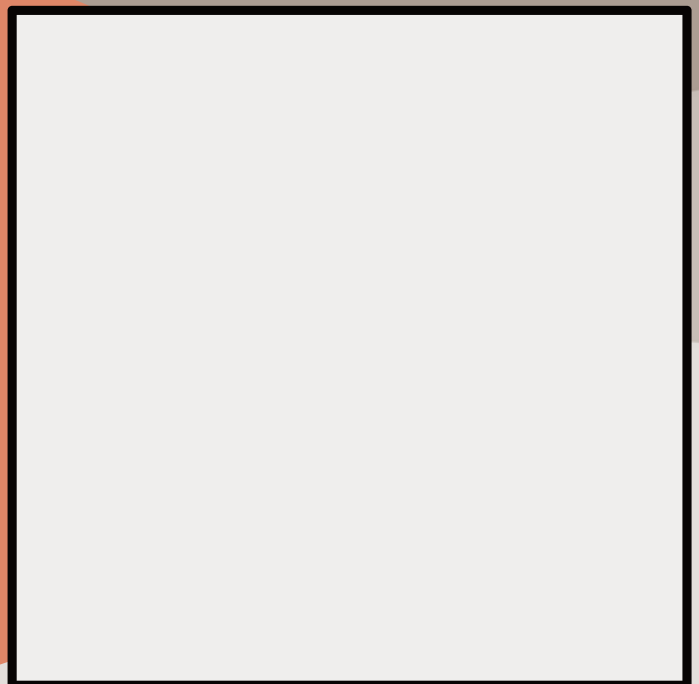
Rock art in the canyon is from ancestors of the Shoshone People. There is carved art as well as painted art. We protect it by keeping the location private and asking visitors not to seek it out.



Rock art is from a time before written communication! The art itself was a form of communication, but we can't be certain today what it means. Of course archaeologists, anthropologists, and any person that sees it can offer good guesses, but there's no certainty.

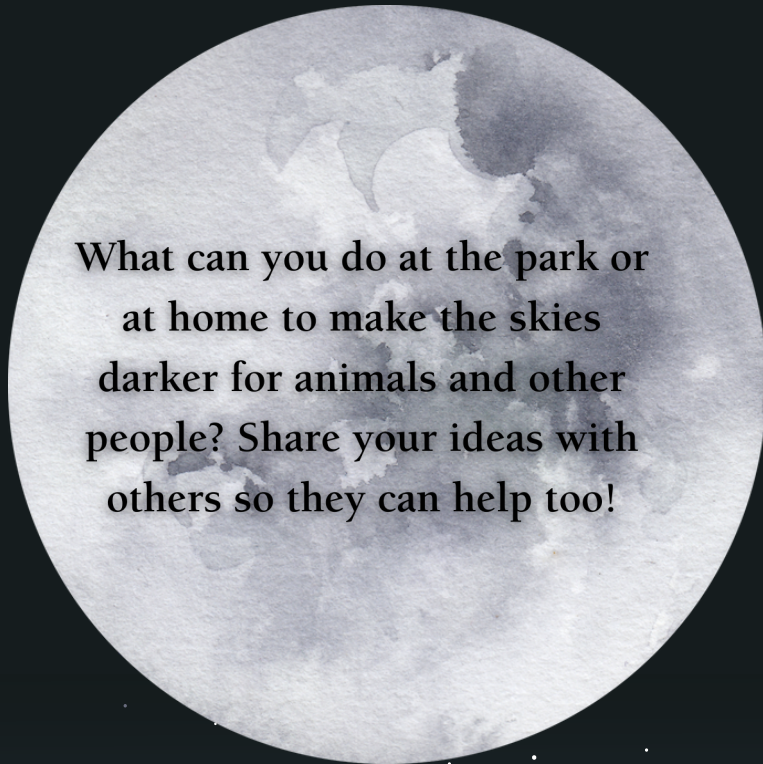


These works of art must have been important - maybe telling the story of where good hunting was, giving direction, or as a warning. If you were drawing an important piece of your life today - to leave a message for yourself in the future or for others - what would you draw? Draw your message in the box and share the story with the people you are with.



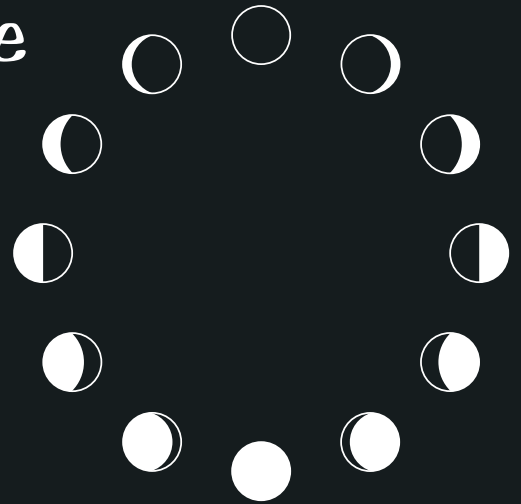
Dark Skies are a Resource

Dark skies are mesmerizing and we love to see them when camping, but did you know that dark skies are important to plants and animals? Darkness is important for things like sleeping, hunting, and hiding.



What can you do at the park or at home to make the skies darker for animals and other people? Share your ideas with others so they can help too!

New moon



Full moon - egewen

Many nocturnal animals (those that are most active at night) are out more at different phases of the moon cycle. What are some animals that you think might be more active at full moon when there's lots of light or new moon when it's very dark?

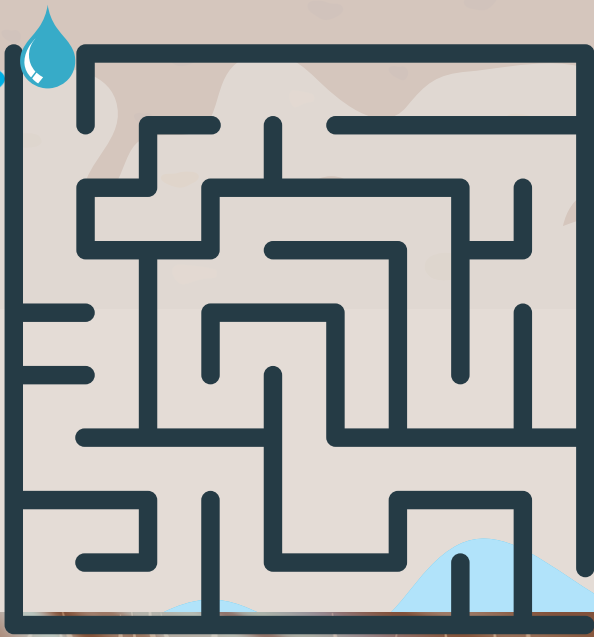
Connect the brightest 7 stars to see a constellation that's often visible at the park. This constellation is called the white jack rabbit (Dosa Gamu) by the Eastern Shoshone.



The Mystery of the Popo Agie River

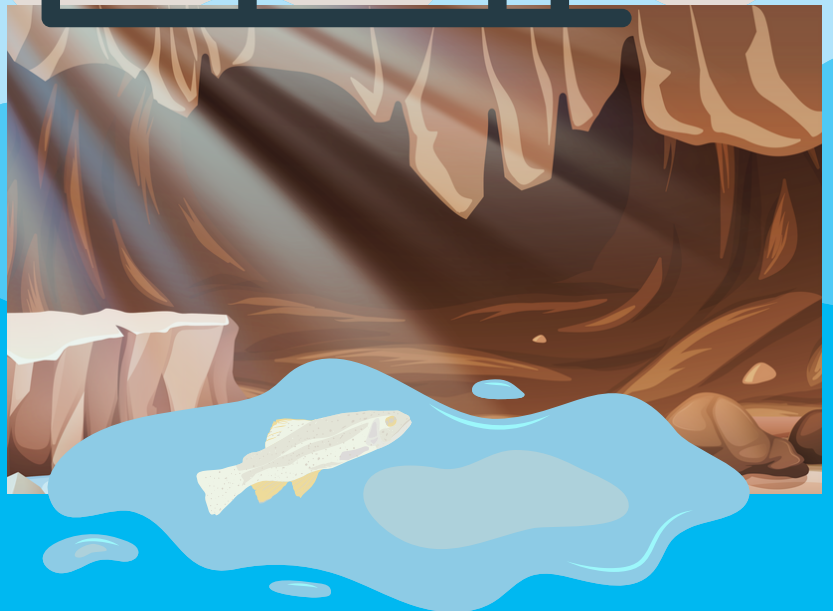
The name Popo Agie (pah-po-shuh) comes from a Crow term for "gurgling river", which is still fitting today. The gurgling river mysteriously "sinks" into the canyon wall near the visitor center. The river reappears down the canyon at the "rise". Studies have found that the water takes anywhere from two up to eight hours to make it that short distance. More water comes out than goes in, and it's also warmer when it resurfaces! What do you think might cause those changes?

Each year, the river floods in late spring. It was after one of these floods in the 1990s that an employee found an underground cave! Visitors to the cave can see the river running underground, proving it doesn't actually disappear.



As water seeps through fissures (a long crack in rock) it breaks down the rock and washes away the sediment. This is how Boulder Choke Cave was formed. Can you help the water droplet make its way from the Sinks through the cave to the Rise?

Animals such as trout live in this cave. The fish have lost their color as they don't see sunlight. How do you think these fish end up here?

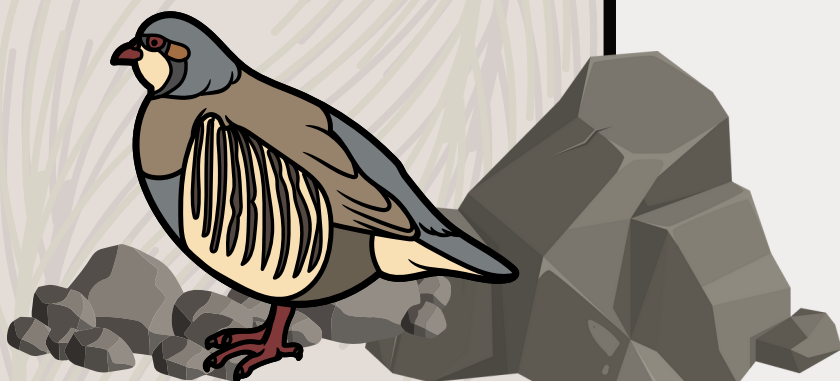
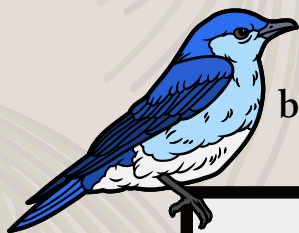


Bird Life of Sinks Canyon



Osprey (bēngkwi gwēshi) predominately eat fish! If you're lucky, you might see one diving in the river for fish or enjoying its catch up on a branch.

Mountain bluebirds (wogwēruiyuh) are a beautiful treat to see! Their feathers aren't actually blue - it's a reflection of blue that our eyes perceive. That's why the color is so vibrant!

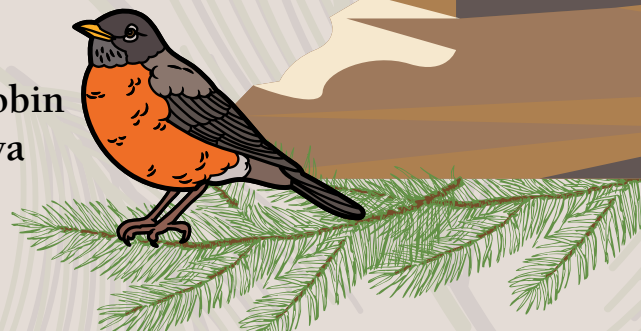


Chukars were an introduced bird for hunting from Eurasia and are now naturalized.

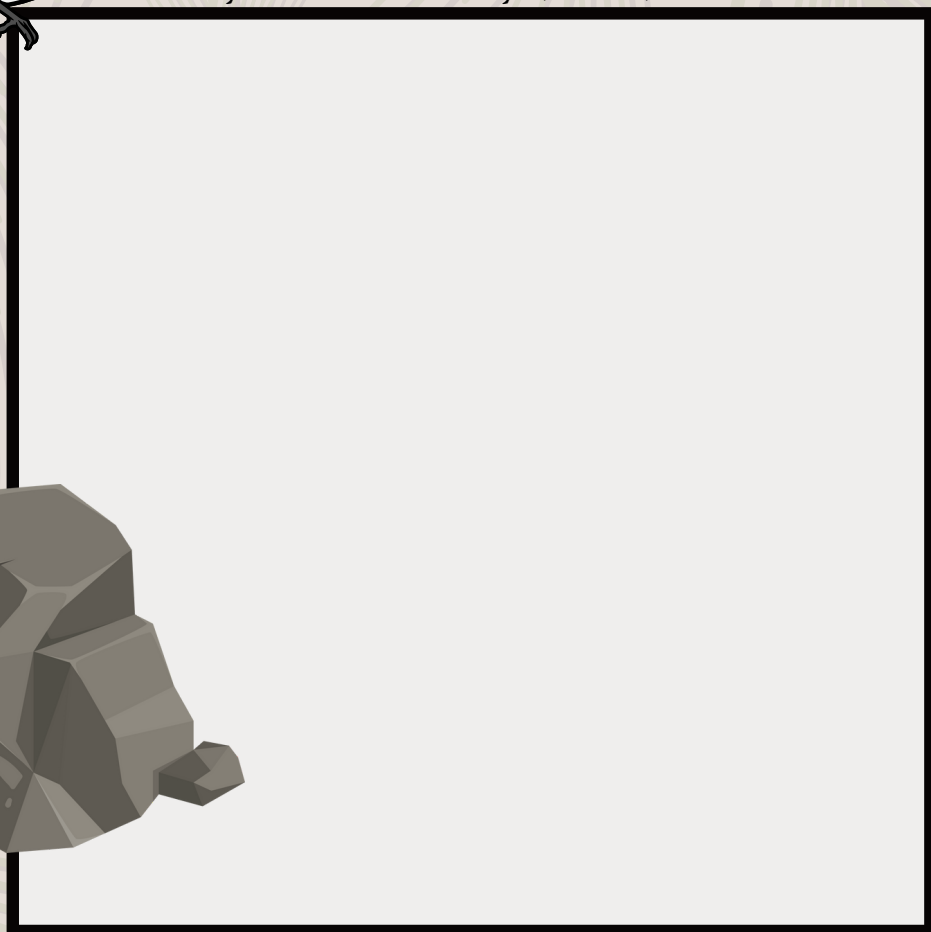
The biggest raptor you'll see in the canyon is the golden eagle (bia gwinya). Look high on the canyon walls to spot one!



American Robin
suakwakwa



Sinks Canyon has birds of prey, water birds, song birds, and more. Draw a bird that caught your eye out in the park or in the visitor center. What color were the birds' beak and legs? Did it have any color - maybe around its eye, neck, or tail?



The Small Things

We don't overlook the small things at Sinks Canyon State Park! Can you fill out this crossword with details you learned from the book?

1
2
3
4
5
6
7
8
9
10
11

baganduru
Down

bishu

ge'a



Across

3. The constellation of seven stars - and the bird that hangs out at the Sinks
7. Though not native, this introduced bird is considered naturalized and not invasive
8. A long crack in the rock
9. Describing an animal most active at night
10. This piscivore often nests near water

1. Where the Popo Agie disappears into the canyon
2. The animal found in the pool where the Popo Agie reappears
4. Physical evidence that people have been in the canyon for thousands of years
5. This Tribe's description of the river is the same name we use today
6. Three different _____ are found in the canyon
11. Where the Popo Agie reappears



Did you see an insect on your visit? Color in what you saw.



Wyoming State Parks Junior Ranger Pledge

I pledge to preserve the past,
appreciate the present, and
conserve the future of Wyoming
State Parks, Historic Sites, and
Trails, in my life at home and
elsewhere.

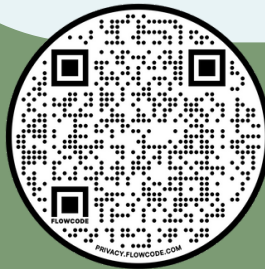
.....

Fort Bridger SHS

Bear River SP

South Pass City SHS

Seminole SP



Scan this QR code to learn
more and see answers!

Scan here for
feedback and contact:



Thank you to the Sinks
Canyon Conservancy for
paying for the printing of
this book.

Complete all five of the district sites
for a special district level badge.

