

FIND SOMETHING UNEXPECTED



Your name:

SEMINOE STATE PARK

JUNIOR RANGER BOOK

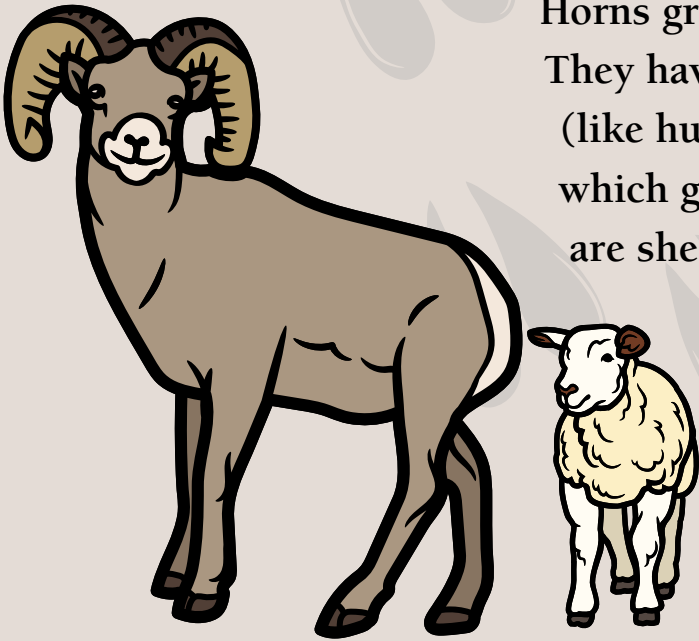
Bighorn Sheep

It is a special treat to get to see bighorn sheep! There are fewer than 600 left in all of Wyoming. Some bighorn sheep have collars on them - a special GPS device that allows biologists to track them to learn about their movements and habits.



Male sheep are called rams and females are ewes. Both have horns! The female horns grow in by the time they're four. they are smaller and curved slightly to a sharp point. Males have large horns that curl around their faces by the age of eight!

Horns grow continuously throughout an animal's life. They have a full bone core and are covered in keratin (like human nails!). They are different from antlers which grow on members of the deer family. Antlers are shed every year and have velvet on the outside instead of keratin.



This is why you rarely find bighorn horns, but might see deer antlers in nature.

	Deer	Sheep/ Bison	Shed Annually	Keratin Exterior	Different for males
Horns					
Antler					

Lichen



Curly or flat - orange to yellow to seafoam green - lichen are an amazing thing! Lichen are not one thing or species, but rather a composite of two things living together: alga and fungi. This means they're neither plant nor animal!

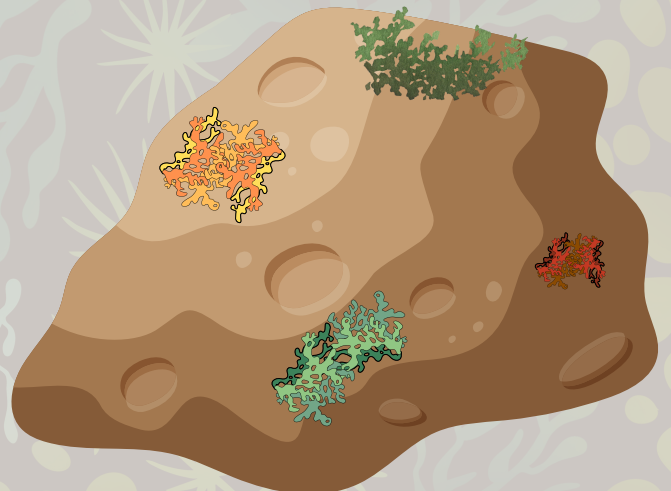
Lichen can live in places little else can - including many big boulders in Seminoe. Overtime, lichen can slowly break down rocks to form habitat for other organisms. Lichen trap small particles making the air quality better for people.

Bighorn sheep have been recorded eating lichen, especially when grasses and other food aren't available.



Around the park, see if you can find:

- Game trail from large animals
- A rock with three colors of lichen
- Orange lichen
- Bighorn sheep
- Animal track



Animal Young



Different species or groups of animals have different terminology for offspring. Just as cats have kittens, wild cats like cougars and bobcats have kittens too!

After frogs lay strings of slimy eggs in water, _____ emerge.

A female bighorn is a _____ and she gives birth to a _____.

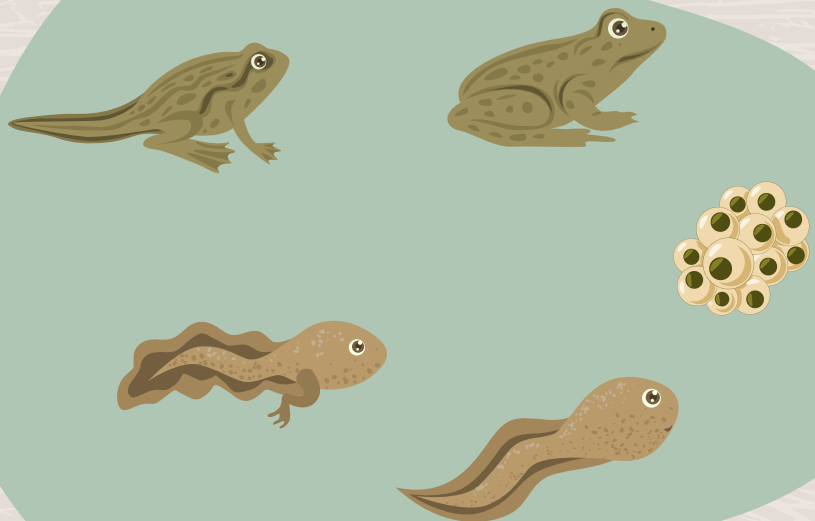
A bird still in the nest, unable to fly is called a _____.

As a member of the deer family, pronghorn young are called _____.

As its "dog" name suggests, a young prairie dog is a _____.



Can you draw arrows to show how the frog life cycle moves?

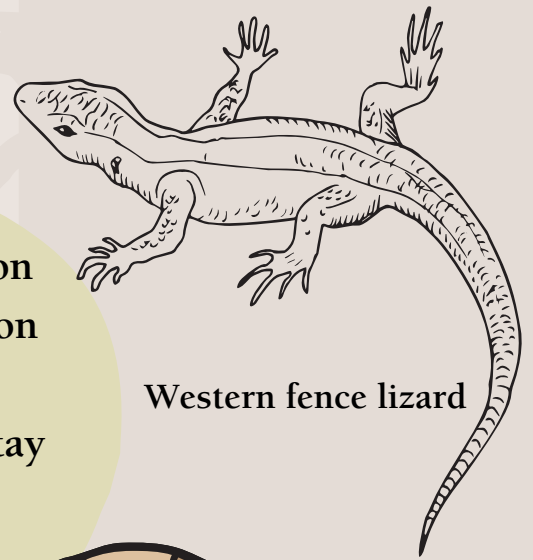


Put the letters underlined in orange here to spell out

Reptiles of the Area

Snakes have many defense mechanisms, depending on the species. We are familiar with venom, but what's on the tail-end that also acts as a defense?

Some snakes are bright colors to warn predators to stay away, while others rely on camouflage to blend in! Color these snakes to help them defend themselves.



Western fence lizard



About 70% of snakes lay eggs! Many venomous snakes, like our prairie rattlesnakes, have live young called snakelets! This is the only venomous snake in the area - don't confuse the big, but harmless bull snake for a rattlesnake!

Both the western hognose and pale milk snake can be found within an hour of here - and before the dam was built they would have lived in the area this park is now.

The milk snake is named because it was found in dairy barns - not because it was drinking milk as people thought, but because it was eating the mice that lived there! Where might the hognose snake get its name?

Western hognose



Pale milk snake

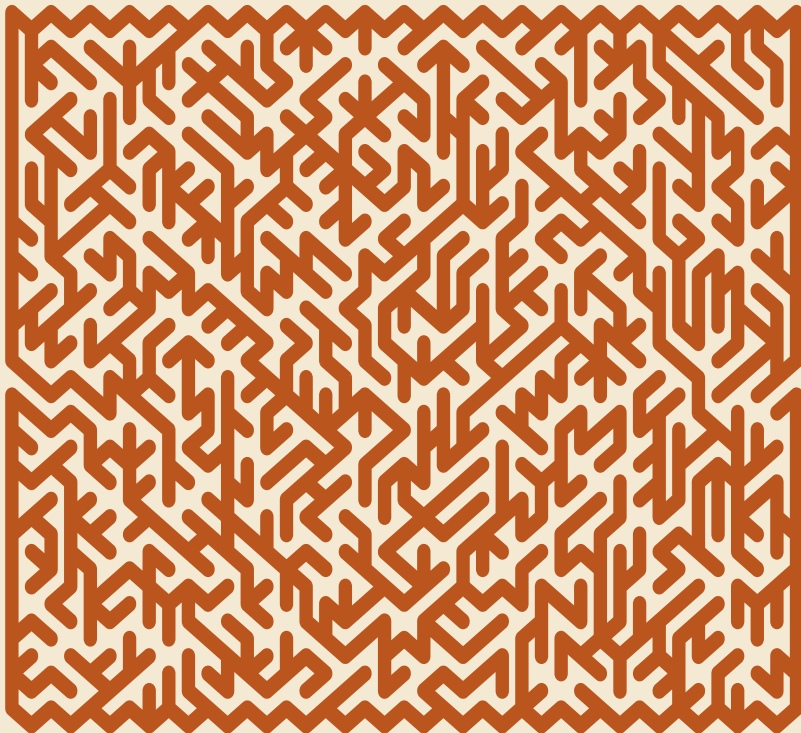


Red Beds

What were your first thoughts when you pulled up to Seminoe State Park? The sea of rock layers is often the most striking thing on the horizon. Did you notice the names of the campgrounds - do they make sense for names here?

The bright red rocks are Goose Egg, Chugwater, and Jelm Formations from the Permian and Triassic Age (~295-201 million years ago). The rock types are sandstone, siltstone, and shale - they turn red from oxidation (or rusting) of iron. Geologists call these "red beds"!

See if you can navigate the many lines, cracks, and merging in rocks in the maze below.





Ten Essentials

When going out on an adventure, it's important to be prepared. What are some special things you packed to come to Seminole State Park?

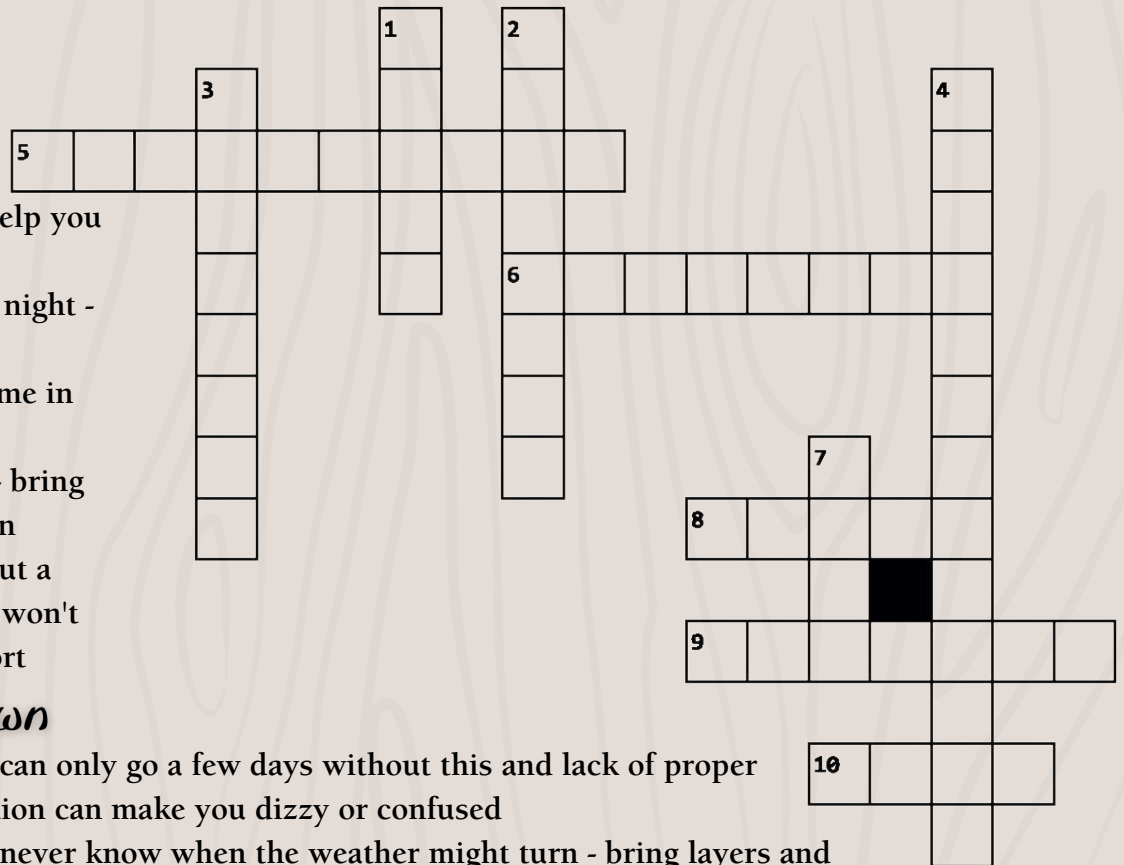
There are ten essentials experts advise to bring when going backpacking or hiking to help you in case of emergencies. Use this crossword to learn what they are!

Across

5. A map or compass will help you with finding your way
6. This will help you see at night - and keep your hands free
8. This is a tool that can come in handy for all kinds of cuts
9. Exposure can be deadly - bring a form of this for protection
10. You can survive for about a week without this, but you won't have much energy or comfort

Down

1. You can only go a few days without this and lack of proper hydration can make you dizzy or confused
2. You never know when the weather might turn - bring layers and remember "cotton kills"
3. You never know when you might need a band aid - or something more
4. You don't want a sunburn, dehydration, or eye damage
7. To cook food or stay warm - you should have three ways to start one of these





Wyoming State Parks Junior Ranger Pledge

I pledge to preserve the past,
appreciate the present, and
conserve the future of Wyoming
State Parks, Historic Sites, and
Trails, and in my life at home
and elsewhere.

.....

Fort Bridger SHS

Sinks Canyon SP

South Pass City SHS

Bear River SP



Scan this QR code to learn
more and see answers!

Scan here for
feedback and contact:



Thank you to Carbon County Higher
Education Center for the printing of these books.

CARBON COUNTY
HIGHER EDUCATION CENTER

Complete all five of the district sites
for a special district level badge.