



VISITOR USE PROGRAM

2022



State Parks



Historic Sites



Trails

Wyoming State Parks, Historic Sites & Trails

WYOPARKS.WYO.GOV



TABLE OF CONTENTS

1	Table of Contents
2	Introduction
3	Collection Methodology
4	2022 Visitation Report (Alphabetically)
5	2022 Visitation Report (by Visitation)
6	2022 Visitation Report (by Type, Alphabetically)
7-8	2022 Monthly Report (by Type)
9-24	2022 Detailed Monthly Report (by Type, by Park/Site)
25	Graph 1 (2022 State Historic Sites Visitation)
26	Graph 2 (2022 State Parks Visitation)
27	Graph 3 (2022 State Parks & Historic Sites Visitation)

CONTACT INFORMATION

Visitor Use Coordinator
2301 Central Ave
Cheyenne, WY 82002
Phone: 307-777-6323
Email: state.parks.parks@wyo.gov



INTRODUCTION

This report contains a summary of visitor use statistics collected at Wyoming State Parks, Historic Sites & Trails (SPHS&T) during the 2022 season (January 1st through December 31st). This report is the ninth year to compare the year round data for all sites. Prior to 2013 we collected year round data at only the following sites: Historic Governors' Mansion, Pioneer Museum, Bear River Travel Center Lobby, Trail End and Fort Phil Kearny Visitor Centers.

The 2022 visitor use report includes the comparison of the five year (2017-2021) average to current annual visitation. It also provides data for years 2020 and 2021. This gives better trend data and normalizes the data over a longer period of time. The five year average is accurate for parks and sites that collected data during May-October.

Wyoming State Parks and Historic Sites' annual visitation numbers for 2022 indicate high visitor use is here to stay with over 5.2 million visitors across all parks and historic sites. In recent years, Wyoming's outdoors have seen unprecedented visitation throughout the state and those high numbers have continued through 2022. 2020 saw over 5.8 million visitors, with 2021 over 5.7 million visitors.

Individually, state parks hosted nearly 4.9 million visitors, 3% above the five-year average, and historic sites hosted over 350,000 visitors, 12% above the five-year average. Wyoming State Parks and Historic Sites' current numbers remain well above pre-pandemic visitation which can be attributed to the retention of many first-time guests during this extreme visitation period.

State parks and historic sites also saw a continued increase in fall visitation during 2022. September visitation was 14% above the five-year average, and October's was 21% above the five-year average.

These numbers provide continued encouragement to Wyoming State Parks and Historic Sites' officials, who attribute the growth to the hard work and dedication of park staff and their efforts to extend and enhance shoulder season visitation.



METHODOLOGY

Data used in the following reports was collected during the 2022 calendar year by traffic counters (TRAFx) or by manual hand counts at visitor centers, museums, and some historic sites. In total, SPHS&T collects visitor use data at 29 parks and historic sites using 69 traffic counters. In 2016, SPHS&T purchased new TRAFx traffic counters to replace 10 year old hardware. The new traffic counters provide accurate and reliable data, which is then analyzed by TRAFx software to produce our visitation data. Vehicles are counted by the interruption of a magnetic field by metal objects. These counters are extremely compact and require no AC, solar power, or inductive loops as the prior counters did. These traffic counters are not susceptible to lightning strikes or rodents chewing wires.

The raw data is retrieved at the end of each collection month by SPHS&T personnel using a portable device called a G3 dock. This unit extracts all data from the monitoring site where it is stored in memory. The G3 Dock is then brought back to a computer and downloaded, then uploaded to the TRAFx server. Using TrafX software, park staff can then analyze the data and view visitation trends. The raw counts are analyzed with statistical factors such as average number of persons per vehicle at different times of year and the estimated number of visitors is calculated. These values come from visitor surveys designed to collect information pertinent to the visitor use program. The values used to calculate the data in this report are from the 2019 Visitor Use Survey.

While the traffic counters are extremely helpful to document visitation, they don't always operate perfectly. Periodically the counters need to be adjusted or calibrated due to erratic counts or no counts at all. This is typically caused by a dead battery or insecure housing but occasionally is counter error. In the case where a counter fails to collect for less than 75% of the month, the TrafX software uses statistical averages from previous years and months to complete the visitation reports.

There were three sites in 2022 with large increases or decreases that should be noted. Independence Rock had calibration issues that were not noticed in prior years; the numbers from 2022 are accurate. Legend Rock had a large increase over the previous year due to what we believe was counter error in 2021. Trail End Historic Site added a pedestrian counter to more accurately capture site usage; the new counter captures visitors walking in and out of the site on a hiking trail.

All documentation, source code and files are available upon request. It is important to note that the data contained in this report is the agency's best estimate of visitation to State Parks and Historic Sites. The estimate is based on sound statistical science and every effort has been made to ensure data accuracy.

2022 Visitor Use By Name

	FIVE YEAR AVERAGE 2017-2021	2020 VISITATION	2021 VISITATION	2022 VISITATION	CHANGE FROM PRIOR YEAR	% CHANGE FROM PRIOR YEAR	% CHANGE FROM FIVE YEAR AVERAGE
Ames Monument	20,172	26,525	22,054	19,313	-2,933	-13%	-4%
Bear River - Park Road	229,900	278,159	254,692	270,640	15,948	6%	18%
Bear River - Travel Center	164,966	184,017	156,767	188,492	31,725	20%	14%
Boysen	250,959	412,744	393,839	368,516	-25,323	-6%	47%
Buffalo Bill	125,723	173,273	178,608	143,225	-35,383	-20%	14%
Buffalo Bill Dam Visitor Center	67,428	41,416	75,133	73,367	-1,766	-2%	9%
Camp Douglas	NA	418	863	700	-163	-19%	NA
Curt Gowdy	386,406	621,934	535,286	543,571	8,285	2%	41%
Edness Kimball Wilkins	100,207	73,032	121,610	126,949	5,339	4%	27%
Ft. Bridger	76,436	44,149	78,562	87,132	8,570	11%	14%
Ft. Fetterman Museum	1,729	853	1,833	1,310	-518	-28%	-24%
Ft. Phil Kearny	17,696	14,341	20,515	19,842	-673	-3%	12%
Ft. Steele	3,168	2,742	2,159	2,919	760	35%	-8%
Glendo	517,470	610,836	657,067	515,252	-141,815	-22%	0%
Guernsey	151,804	187,172	210,894	154,624	-56,270	-27%	2%
Hawk Springs	25,740	29,451	25,667	21,432	-4,235	-16%	-17%
Historic Governors' Mansion	7,440	3,977	7,093	5,986	-1,107	-16%	-20%
Hot Springs	1,861,704	1,884,146	1,757,299	1,521,150	-236,149	-13%	-18%
Independence Rock	31,104	28,886	38,305	11,961	-26,344	-69%	-62%
Keyhole	252,712	306,122	248,797	230,765	-18,032	-7%	-9%
Legend Rock	8,980	7,688	3,343	7,551	4,208	126%	-16%
Medicine Lodge SAS	44,213	51,247	52,638	49,267	-3,371	-6%	11%
Oregon Trail Ruts	34,433	32,315	36,185	26,790	-9,395	-26%	-22%
Pioneer Museum	4,234	2,026	5,156	5,816	660	13%	37%
Quebec 01	NA	2,107	5,351	4,184	-1,167	-22%	NA
Register Cliff	26,096	30,939	18,950	19,513	563	3%	-25%
Seminole	42,347	59,337	45,425	36,143	-9,282	-20%	-15%
Sinks Canyon	508,504	699,490	668,690	635,194	-33,496	-5%	25%
South Pass City	14,861	9,447	16,765	13,808	-2,957	-18%	-7%
Trail End	16,265	13,508	17,811	25,250	7,439	42%	55%
Wyoming Territorial Prison	51,908	41,729	89,536	98,996	9,460	11%	91%
TOTAL	5,044,605	5,874,026	5,746,893	5,229,659	-517,234	-10%	4%

2022 Visitor Use By Site Visitation

	FIVE YEAR AVERAGE 2017-2021	2020 VISITATION	2021 VISITATION	2022 VISITATION	CHANGE FROM PRIOR YEAR	% CHANGE FROM PRIOR YEAR	% CHANGE FROM FIVE YEAR AVERAGE
Non-Fee Sites							
Hot Springs	1,861,704	1,884,146	1,757,299	1,521,150	-236,149	-13%	-18%
Bear River - Park Road	229,900	278,159	254,692	270,640	15,948	6%	18%
Bear River - Travel Center	164,966	184,017	156,767	188,492	31,725	20%	14%
Buffalo Bill Dam Visitor Center	67,428	41,416	75,133	73,367	-1,766	-2%	9%
Oregon Trail Ruts	34,433	32,315	36,185	26,790	-9,395	-26%	-22%
Register Cliff	26,096	30,939	18,950	19,513	563	3%	-25%
Ames Monument	20,172	26,525	22,054	19,313	-2,933	-13%	-4%
Independence Rock	31,104	28,886	38,305	11,961	-26,344	-69%	-62%
Legend Rock	8,980	7,688	3,343	7,551	4,208	126%	-16%
Historic Governors' Mansion	7,440	3,977	7,093	5,986	-1,107	-16%	-20%
Camp Douglas	NA	418	863	700	-163	-19%	NA
TOTAL	2,452,223	2,518,486	2,370,684	2,145,463	-225,221	-10%	-13%
Fee Sites							
Sinks Canyon	508,504	699,490	668,690	635,194	-33,496	-5%	25%
Curt Gowdy	386,406	621,934	535,286	543,571	8,285	2%	41%
Glendo	517,470	610,836	657,067	515,252	-141,815	-22%	0%
Boysen	250,959	412,744	393,839	368,516	-25,323	-6%	47%
Keyhole	252,712	306,122	248,797	230,765	-18,032	-7%	-9%
Guernsey	151,804	187,172	210,894	154,624	-56,270	-27%	2%
Buffalo Bill	125,723	173,273	178,608	143,225	-35,383	-20%	14%
Edness Kimball Wilkins	100,207	73,032	121,610	126,949	5,339	4%	27%
Wyoming Territorial Prison	51,908	41,729	89,536	98,996	9,460	11%	91%
Ft. Bridger	76,436	44,149	78,562	87,132	8,570	11%	14%
Medicine Lodge SAS	44,213	51,247	52,638	49,267	-3,371	-6%	11%
Seminole	42,347	59,337	45,425	36,143	-9,282	-20%	-15%
Trail End	16,265	13,508	17,811	25,250	7,439	42%	55%
Hawk Springs	25,740	29,451	25,667	21,432	-4,235	-16%	-17%
Ft. Phil Kearny	17,696	14,341	20,515	19,842	-673	-3%	12%
South Pass City	14,861	9,447	16,765	13,808	-2,957	-18%	-7%
Pioneer Museum	4,234	2,026	5,156	5,816	660	13%	37%
Quebec 01	NA	2,107	5,351	4,184	-1,167	-22%	NA
Ft. Steele	3,168	2,742	2,159	2,919	760	35%	-8%
Ft. Fetterman Museum	1,729	853	1,833	1,310	-518	-28%	-24%
TOTAL	2,592,382	3,355,540	3,376,209	3,084,195	-292,014	-9%	19%
GRAND TOTAL	5,044,605	5,874,026	5,746,893	5,229,659	-517,234	-9%	4%

2022 Visitor Use By Site Type

	FIVE YEAR AVERAGE 2017-2021	2020 VISITATION	2021 VISITATION	2022 VISITATION	CHANGE FROM PRIOR YEAR	% CHANGE FROM PRIOR YEAR	% CHANGE FROM FIVE YEAR AVERAGE
Historic Sites							
Ames Monument	20,172	26,525	22,054	19,313	-2,933	-13%	-4%
Camp Douglas	NA	418	863	700	-163	-19%	NA
Ft. Bridger	76,436	44,149	78,562	87,132	8,570	11%	14%
Ft. Fetterman Museum	1,729	853	1,833	1,310	-518	-28%	-24%
Ft. Phil Kearny	17,696	14,341	20,515	19,842	-673	-3%	12%
Ft. Steele	3,168	2,742	2,159	2,919	760	35%	-8%
Historic Governors' Mansion	7,440	3,977	7,093	5,986	-1,107	-16%	-20%
Independence Rock	31,104	28,886	38,305	11,961	-26,344	-69%	-62%
Legend Rock	8,980	7,688	3,343	7,551	4,208	126%	-16%
Oregon Trail Ruts	34,433	32,315	36,185	26,790	-9,395	-26%	-22%
Pioneer Museum	4,234	2,026	5,156	5,816	660	13%	37%
Quebec 01	NA	2,107	5,351	4,184	-1,167	-22%	NA
Register Cliff	26,096	30,939	18,950	19,513	563	3%	-25%
South Pass City	14,861	9,447	16,765	13,808	-2,957	-18%	-7%
Trail End	16,265	13,508	17,811	25,250	7,439	42%	55%
Wyoming Territorial Prison	51,908	41,729	89,536	98,996	9,460	11%	91%
Historic Sites Total	314,522	261,650	364,481	351,072	-13,409	-4%	12%
State Parks							
Bear River - Park Road	229,900	278,159	254,692	270,640	15,948	6%	18%
Bear River - Travel Center	164,966	184,017	156,767	188,492	31,725	20%	14%
Boysen	250,959	412,744	393,839	368,516	-25,323	-6%	47%
Buffalo Bill	125,723	173,273	178,608	143,225	-35,383	-20%	14%
Buffalo Bill Dam Visitor Center	67,428	41,416	75,133	73,367	-1,766	-2%	9%
Curt Gowdy	386,406	621,934	535,286	543,571	8,285	2%	41%
Edness Kimball Wilkins	100,207	73,032	121,610	126,949	5,339	4%	27%
Glendo	517,470	610,836	657,067	515,252	-141,815	-22%	0%
Guernsey	151,804	187,172	210,894	154,624	-56,270	-27%	2%
Hawk Springs	25,740	29,451	25,667	21,432	-4,235	-16%	-17%
Hot Springs	1,861,704	1,884,146	1,757,299	1,521,150	-236,149	-13%	-18%
Keyhole	252,712	306,122	248,797	230,765	-18,032	-7%	-9%
Medicine Lodge SAS	44,213	51,247	52,638	49,267	-3,371	-6%	11%
Seminole	42,347	59,337	45,425	36,143	-9,282	-20%	-15%
Sinks Canyon	508,504	699,490	668,690	635,194	-33,496	-5%	25%
State Parks Total	4,730,083	5,612,376	5,382,412	4,878,587	-503,825	-10%	3%
GRAND TOTAL	5,044,605	5,874,026	5,746,893	5,229,659	-517,234	-10%	4%

2022 Visitor Use By Site Type - Monthly

	FIVE YEAR AVERAGE 2017-2021	2020 VISITATION	2021 VISITATION	2022 VISITATION	CHANGE FROM PRIOR YEAR	% CHANGE FROM PRIOR YEAR	% CHANGE FROM FIVE YEAR AVERAGE
Historic Sites							
January	6,526	7,224	8,155	5,305	-2,850	-35%	-19%
February	6,143	7,970	6,522	6,783	261	4%	10%
March	9,902	9,102	9,633	9,657	24	0%	-2%
April	15,093	11,008	17,261	12,534	-4,727	-27%	-17%
May	27,003	21,126	31,070	29,128	-1,942	-6%	8%
June	41,615	28,006	51,399	42,272	-9,127	-18%	2%
July	51,798	41,673	56,743	53,677	-3,066	-5%	4%
August	44,328	39,000	44,474	47,608	3,134	7%	7%
September	52,908	31,688	63,133	72,117	8,984	14%	36%
October	19,255	19,702	24,426	25,782	1,356	6%	34%
November	8,891	8,661	9,507	8,643	-864	-9%	-3%
December	31,058	36,490	42,153	37,566	-4,587	-11%	21%
State Historic Sites Total	314,520	261,650	364,476	351,072	-13,404	-4%	12%
State Parks							
January	169,131	190,190	169,572	209,315	39,743	23%	24%
February	161,437	188,239	149,384	199,217	49,833	33%	23%
March	212,541	246,507	270,547	222,918	-47,629	-18%	5%
April	282,906	345,369	329,724	275,412	-54,312	-16%	-3%
May	555,294	674,280	667,621	512,238	-155,383	-23%	-8%
June	736,178	826,910	880,911	724,163	-156,748	-18%	-2%
July	778,551	903,361	847,332	819,149	-28,183	-3%	5%
August	668,463	811,668	770,137	668,772	-101,365	-13%	0%
September	454,396	542,283	531,304	508,854	-22,450	-4%	12%
October	319,432	389,454	363,151	384,696	21,545	6%	20%
November	209,868	266,303	238,724	187,300	-51,424	-22%	-11%
December	182,552	227,812	164,005	166,554	2,549	2%	-9%
State Parks Total	4,730,749	5,612,376	5,382,412	4,878,587	-503,825	-10%	3%

2022 Visitor Use By Site Type - Monthly

	FIVE YEAR AVERAGE 2017-2021	2020 VISITATION	2021 VISITATION	2022 VISITATION	CHANGE FROM PRIOR YEAR	% CHANGE FROM PRIOR YEAR	% CHANGE FROM FIVE YEAR AVERAGE
State Parks & Historic Sites							
January	175,657	197,414	177,727	214,621	36,894	21%	22%
February	167,580	196,209	155,906	206,000	50,094	32%	23%
March	222,443	255,609	280,180	232,575	-47,605	-17%	5%
April	297,999	356,377	346,985	287,946	-59,039	-17%	-3%
May	582,297	695,406	698,691	541,367	-157,324	-23%	-7%
June	777,793	854,916	932,310	766,435	-165,875	-18%	-1%
July	830,349	945,034	904,075	872,826	-31,249	-3%	5%
August	712,791	850,668	814,611	716,380	-98,231	-12%	1%
September	507,304	573,971	594,437	580,970	-13,467	-2%	15%
October	338,687	409,156	387,577	410,477	22,900	6%	21%
November	218,759	274,964	248,231	195,943	-52,288	-21%	-10%
December	213,610	264,302	206,158	204,120	-2,038	-1%	-4%
Grand Total	5,045,269	5,874,026	5,746,888	5,229,659	-517,229	-9%	4%

2022 Visitor Use By Site

	FIVE YEAR AVERAGE 2017-2021	2020 VISITATION	2021 VISITATION	2022 VISITATION	CHANGE FROM PRIOR YEAR	% CHANGE FROM PRIOR YEAR	% CHANGE FROM FIVE YEAR AVERAGE
State Historic Sites							
Ames Monument							
January	282	333	NA	192	NA	NA	NA
February	297	351	428	519	91	21%	75%
March	700	1,423	865	860	-5	-1%	23%
April	1,486	2,681	1,744	1,785	41	2%	20%
May	2,661	3,518	2,314	2,108	-206	-9%	-21%
June	2,499	3,475	3,155	2,625	-530	-17%	5%
July	3,896	4,587	4,081	3,492	-589	-14%	-10%
August	3,017	3,751	3,012	2,579	-433	-14%	-15%
September	2,385	2,811	2,451	2,097	-354	-14%	-12%
October	1,249	1,533	1,650	1,649	-1	0%	32%
November	1,091	1,172	1,449	771	-678	-47%	-29%
December	664	890	905	636	-269	-30%	-4%
Ames Monument Total	20,172	26,525	22,054	19,313	-2,933	-13%	-4%
Camp Douglas							
January	NA	NA	12	NA	#VALUE!	NA	NA
February	NA	NA	9	8	-1	NA	NA
March	NA	NA	0	7	7	NA	NA
April	NA	NA	27	3	-24	NA	NA
May	NA	NA	128	156	28	NA	NA
June	NA	32	174	165	-9	-5%	NA
July	NA	128	265	174	-91	-34%	NA
August	NA	125	174	136	-38	-22%	NA
September	NA	114	51	25	-26	-51%	NA
October	NA	19	2	22	20	1000%	NA
November	NA	NA	16	4	-12	-75%	NA
December	NA	NA	5	0	-5	-100%	NA
Camp Douglas Total	NA	418	863	700	-163	-19%	NA

2022 Visitor Use By Site

	FIVE YEAR AVERAGE 2017-2021	2020 VISITATION	2021 VISITATION	2022 VISITATION	CHANGE FROM PRIOR YEAR	% CHANGE FROM PRIOR YEAR	% CHANGE FROM FIVE YEAR AVERAGE
Fort Bridger							
January	1,676	1,907	1,091	1,242	151	14%	-26%
February	1,632	1,908	601	1,155	554	92%	-29%
March	2,711	3,086	1,423	1,671	248	17%	-38%
April	2,772	1,472	2,807	2,554	-253	-9%	-8%
May	6,358	3,314	6,355	6,002	-353	-6%	-6%
June	9,523	5,071	9,826	8,106	-1,721	-18%	-15%
July	9,923	7,278	10,701	9,695	-1,006	-9%	-2%
August	9,248	6,969	9,621	12,849	3,228	34%	39%
September	24,671	6,086	28,524	36,475	7,951	28%	48%
October	5,047	4,986	5,099	4,074	-1,025	-20%	-19%
November	1,878	1,441	1,494	2,222	728	49%	18%
December	997	631	1,020	1,089	69	7%	9%
Fort Bridger Total	76,436	44,149	78,562	87,132	8,570	11%	14%
Fort Fetterman							
January	NA	NA	NA	NA	NA	NA	NA
February	NA	NA	NA	NA	NA	NA	NA
March	NA	NA	NA	NA	NA	NA	NA
April	NA	NA	NA	NA	NA	NA	NA
May	63	0	16	31	15	94%	-51%
June	373	154	362	606	244	67%	62%
July	791	290	907	365	-542	-60%	-54%
August	388	218	474	263	-211	-45%	-32%
September	113	191	69	45	-24	-35%	-60%
October	NA	NA	NA	NA	NA	NA	NA
November	NA	NA	NA	NA	NA	NA	NA
December	NA	NA	NA	NA	NA	NA	NA
Fort Fetterman Museum Total	1,729	853	1,833	1,310	-518	-28%	-24%

2022 Visitor Use By Site

	FIVE YEAR AVERAGE 2017-2021	2020 VISITATION	2021 VISITATION	2022 VISITATION	CHANGE FROM PRIOR YEAR	% CHANGE FROM PRIOR YEAR	% CHANGE FROM FIVE YEAR AVERAGE
Fort Phil Kearny							
January	499	588	852	410	-442	-52%	-18%
February	305	417	656	647	-9	-1%	112%
March	454	351	846	907	61	7%	100%
April	855	417	1,102	1,087	-15	-1%	27%
May	1,546	831	1,850	1,373	-477	-26%	-11%
June	2,542	1,539	2,890	3,038	148	5%	20%
July	2,757	1,978	3,442	2,797	-645	-19%	1%
August	3,429	2,396	2,823	3,045	222	8%	-11%
September	2,595	2,193	2,662	2,671	9	0%	3%
October	1,196	1,198	1,417	1,486	69	5%	24%
November	790	1,365	1,125	1,369	244	22%	73%
December	729	1,068	850	1,012	162	19%	39%
Fort Phil Kearny Total	17,696	14,341	20,515	19,842	-673	-3%	12%
Fort Steele							
January	NA	NA	NA	NA	NA	NA	NA
February	NA	NA	NA	NA	NA	NA	NA
March	NA	NA	NA	NA	NA	NA	NA
April	NA	NA	NA	NA	NA	NA	NA
May	NA	NA	NA	NA	NA	NA	NA
June	808	582	642	891	249	39%	10%
July	766	527	358	785	427	119%	2%
August	943	1,191	796	852	56	7%	-10%
September	558	442	363	391	28	8%	-30%
October	NA	NA	NA	NA	NA	NA	NA
November	NA	NA	NA	NA	NA	NA	NA
December	NA	NA	NA	NA	NA	NA	NA
Fort Steele Total	3,168	2,742	2,159	2,919	760	35%	-8%

2022 Visitor Use By Site

	FIVE YEAR AVERAGE 2017-2021	2020 VISITATION	2021 VISITATION	2022 VISITATION	CHANGE FROM PRIOR YEAR	% CHANGE FROM PRIOR YEAR	% CHANGE FROM FIVE YEAR AVERAGE
Historic Governor's Mansion							
January	163	163	48	47	-1	-2%	-71%
February	278	388	42	196	154	367%	-29%
March	286	169	150	203	53	35%	-29%
April	464	14	493	625	132	27%	35%
May	621	11	590	391	-199	-34%	-37%
June	815	263	692	643	-49	-7%	-21%
July	1,514	698	1,275	845	-430	-34%	-44%
August	928	681	654	578	-76	-12%	-38%
September	741	525	651	796	145	22%	7%
October	197	20	620	12	-608	-98%	-94%
November	657	402	566	396	-170	-30%	-40%
December	970	643	1,312	1,254	-58	-4%	29%
Historic Gov Mansion Total	7,440	3,977	7,093	5,986	-1,107	-16%	-20%
Independence Rock							
January	1,403	1,928	1,167	332	-835	-72%	-76%
February	1,524	2,685	1,346	332	-1,014	-75%	-78%
March	1,927	1,115	721	611	-110	-15%	-68%
April	1,554	1,041	2,291	518	-1,773	-77%	-67%
May	3,166	4,639	3,956	815	-3,141	-79%	-74%
June	4,907	2,309	8,430	1,209	-7,221	-86%	-75%
July	5,135	3,282	6,930	2,325	-4,605	-66%	-55%
August	3,566	2,568	4,549	1,939	-2,610	-57%	-46%
September	2,679	2,518	3,401	1,568	-1,833	-54%	-41%
October	2,694	4,443	2,833	1,770	-1,063	-38%	-34%
November	1,973	1,179	2,069	416	-1,653	-80%	-79%
December	719	1,179	612	126	-486	-79%	-82%
Independence Rock Total	31,104	28,886	38,305	11,961	-26,344	-69%	-62%

2022 Visitor Use By Site

	FIVE YEAR AVERAGE 2017-2021	2020 VISITATION	2021 VISITATION	2022 VISITATION	CHANGE FROM PRIOR YEAR	% CHANGE FROM PRIOR YEAR	% CHANGE FROM FIVE YEAR AVERAGE
Legend Rock							
January	23	0	0	73	73	NA	217%
February	29	0	33	178	145	NA	514%
March	180	0	280	442	162	58%	146%
April	627	1,515	257	454	197	77%	-28%
May	1,129	742	737	814	77	10%	-28%
June	1,576	904	928	1,579	651	70%	0%
July	1,681	1,210	709	1,204	495	70%	-28%
August	1,539	1,232	104	1,090	986	948%	-29%
September	1,355	1,229	114	994	880	772%	-27%
October	618	622	49	517	468	955%	-16%
November	121	90	60	175	115	192%	45%
December	101	144	72	31	-41	-57%	-69%
Legend Rock Total	8,980	7,688	3,343	7,551	4,208	126%	-16%
Oregon Trail Ruts							
January	574	800	936	260	-676	-72%	-55%
February	635	723	681	259	-422	-62%	-59%
March	1,339	1,197	937	403	-534	-57%	-70%
April	2,698	1,362	1,665	450	-1,215	-73%	-83%
May	3,509	2,812	4,275	3,526	-749	-18%	0%
June	5,317	4,373	6,640	5,251	-1,389	-21%	-1%
July	6,536	6,304	7,283	5,590	-1,693	-23%	-14%
August	6,401	5,625	5,776	4,620	-1,156	-20%	-28%
September	4,404	4,595	4,899	3,919	-980	-20%	-11%
October	1,982	2,544	2,486	1,989	-497	-20%	0%
November	610	1,081	362	290	-72	-20%	-52%
December	429	899	245	233	-12	-5%	-46%
Oregon Trail Ruts Total	34,433	32,315	36,185	26,790	-9,395	-26%	-22%

2022 Visitor Use By Site

	FIVE YEAR AVERAGE 2017-2021	2020 VISITATION	2021 VISITATION	2022 VISITATION	CHANGE FROM PRIOR YEAR	% CHANGE FROM PRIOR YEAR	% CHANGE FROM FIVE YEAR AVERAGE
Pioneer Museum							
January	220	34	195	262	67	34%	19%
February	129	38	89	102	13	15%	-21%
March	88	29	60	141	81	135%	60%
April	235	0	166	226	60	36%	-4%
May	280	2	387	390	3	1%	39%
June	576	287	725	712	-13	-2%	24%
July	718	396	896	696	-200	-22%	-3%
August	1,187	585	1,770	2,338	568	32%	97%
September	415	341	374	424	50	13%	2%
October	237	203	282	279	-3	-1%	18%
November	95	62	151	170	19	13%	79%
December	53	49	61	76	15	25%	43%
Pioneer Museum Total	4,234	2,026	5,156	5,816	660	13%	37%
Quebec 01							
January	NA	110	58	0	-58	-100%	NA
February	NA	108	2	0	-2	-100%	NA
March	NA	106	0	0	0	NA	NA
April	NA	0	61	12	-49	-0.8032786885	NA
May	NA	203	663	423	-240	-36%	NA
June	NA	267	1,243	891	-352	-28%	NA
July	NA	234	1,580	1,176	-404	-26%	NA
August	NA	548	962	758	-204	-21%	NA
September	NA	506	684	902	218	32%	NA
October	NA	25	55	20	-35	-64%	NA
November	NA	NA	NA	2	NA	NA	NA
December	NA	NA	43	0	-43	-1	NA
Quebec 01 Total	NA	2,107	5,351	4,184	-1,167	-22%	NA

2022 Visitor Use By Site

	FIVE YEAR AVERAGE 2017-2021	2020 VISITATION	2021 VISITATION	2022 VISITATION	CHANGE FROM PRIOR YEAR	% CHANGE FROM PRIOR YEAR	% CHANGE FROM FIVE YEAR AVERAGE
Register Cliff							
January	474	571	654	141	-513	-78%	-70%
February	453	639	385	150	-235	-61%	-67%
March	862	1,114	883	251	-632	-72%	-71%
April	1,199	1,336	1,506	301	-1,205	-80%	-75%
May	2,495	2,862	983	2,713	1,730	176%	9%
June	3,973	4,410	1,537	3,689	2,152	140%	-7%
July	4,838	6,427	1,690	4,163	2,473	146%	-14%
August	4,632	5,541	1,229	3,119	1,890	154%	-33%
September	4,495	4,380	6,704	3,055	-3,649	-54%	-32%
October	1,625	2,109	2,080	1,609	-471	-23%	-1%
November	661	886	860	184	-676	-79%	-72%
December	389	664	439	138	-301	-69%	-65%
Register Cliff Total	26,096	30,939	18,950	19,513	563	3%	-25%
South Pass City							
January	NA	NA	NA	NA	NA	NA	NA
February	NA	NA	NA	NA	NA	NA	NA
March	NA	NA	NA	NA	NA	NA	NA
April	NA	NA	NA	NA	NA	NA	NA
May	697	124	960	988	28	3%	42%
June	2,333	642	3,256	2,330	-926	-28%	0%
July	5,583	3,643	5,496	4,639	-857	-16%	-17%
August	3,124	3,033	3,743	2,552	-1,191	-32%	-18%
September	2,620	1,777	3,310	3,299	-11	0%	26%
October	NA	228	NA	NA	N/A	NA	NA
November	NA	NA	NA	NA	N/A	NA	NA
December	NA	NA	NA	NA	N/A	NA	NA
South Pass City Total	14,861	9,447	16,765	13,808	-2,957	-18%	-7%

2022 Visitor Use By Site

	FIVE YEAR AVERAGE 2017-2021	2020 VISITATION	2021 VISITATION	2022 VISITATION	CHANGE FROM PRIOR YEAR	% CHANGE FROM PRIOR YEAR	% CHANGE FROM FIVE YEAR AVERAGE
Trail End							
January	527	502	418	670	252	60%	27%
February	334	437	450	905	455	101%	171%
March	414	379	401	612	211	53%	48%
April	1,477	350	731	1,121	390	53%	-24%
May	1,349	511	1,770	1,935	165	9%	43%
June	2,596	2,595	2,849	2,848	-1	0%	10%
July	2,258	2,252	2,563	3,954	1,391	54%	75%
August	1,987	2,098	2,257	4,016	1,759	78%	102%
September	1,867	1,953	2,125	3,241	1,116	53%	74%
October	1,051	1,065	1,023	2,258	1,235	121%	115%
November	603	626	806	1,158	352	44%	92%
December	1,801	740	2,418	2,532	114	5%	41%
Trail End Total	16,265	13,508	17,811	25,250	7,439	42%	55%
Wyoming Territorial Prison							
January	685	288	2,724	1,676	-1,048	-38%	145%
February	527	276	1,800	2,331	531	30%	342%
March	735	133	3,067	3,550	483	16%	383%
April	1,726	820	4,411	3,398	-1,013	-23%	97%
May	3,129	1,557	6,086	7,463	1,377	23%	139%
June	3,777	1,103	8,050	7,690	-360	-4%	104%
July	5,402	2,439	8,567	11,778	3,211	37%	118%
August	3,939	2,439	6,530	6,874	344	5%	75%
September	4,010	2,027	6,751	12,215	5,464	81%	205%
October	3,359	707	6,830	10,097	3,267	48%	201%
November	412	357	549	1,485	936	170%	260%
December	24,206	29,583	34,171	30,439	-3,732	-11%	26%
Wyoming Territorial Prison Total	51,908	41,729	89,536	98,996	9,460	11%	91%

2022 Visitor Use By Site

	FIVE YEAR AVERAGE 2017-2021	2020 VISITATION	2021 VISITATION	2022 VISITATION	CHANGE FROM PRIOR YEAR	% CHANGE FROM PRIOR YEAR	% CHANGE FROM FIVE YEAR AVERAGE
State Parks							
Bear River - Park Road							
January	10,285	9,665	12,643	12,678	35	0%	23%
February	9,327	9,905	10,152	12,324	2,172	21%	32%
March	15,402	15,341	15,701	15,438	-263	-2%	0%
April	19,046	21,446	18,228	19,317	1,089	6%	1%
May	30,914	39,531	35,696	29,853	-5,843	-16%	-3%
June	28,403	40,378	36,382	32,178	-4,204	-12%	13%
July	32,701	40,859	32,320	31,665	-655	-2%	-3%
August	23,719	40,859	20,332	35,716	15,384	76%	51%
September	20,276	18,188	23,595	28,920	5,325	23%	43%
October	19,254	25,619	19,806	34,165	14,359	72%	77%
November	13,293	12,811	20,194	9,097	-11,097	-55%	-32%
December	7,280	3,557	9,643	9,288	-355	-4%	28%
Bear River - Park Road Total	229,900	278,159	254,692	270,640	15,948	6%	18%
Bear River - Travel Center							
January	6,072	4,872	3,646	7,346	3,700	101%	21%
February	5,179	5,215	1,987	6,341	4,354	219%	22%
March	7,618	6,290	1,937	8,992	7,055	364%	18%
April	8,816	7,118	2,772	16,447	13,675	493%	87%
May	16,808	18,607	21,527	25,918	4,391	20%	54%
June	19,738	21,830	20,838	23,608	2,770	13%	20%
July	19,707	23,983	11,962	18,486	6,524	55%	-6%
August	25,083	23,983	34,787	19,460	-15,327	-44%	-22%
September	23,674	31,393	27,058	20,833	-6,225	-23%	-12%
October	15,404	21,874	12,027	19,431	7,404	62%	26%
November	8,114	7,553	8,590	10,431	1,841	21%	29%
December	8,754	11,299	9,636	11,197	1,561	16%	28%
Bear River - Travel Center Total	164,966	184,017	156,767	188,492	31,725	20%	14%

2022 Visitor Use By Site

	FIVE YEAR AVERAGE 2017-2021	2020 VISITATION	2021 VISITATION	2022 VISITATION	CHANGE FROM PRIOR YEAR	% CHANGE FROM PRIOR YEAR	% CHANGE FROM FIVE YEAR AVERAGE
Boysen							
January	10,576	15,166	19,076	24,553	5,477	29%	132%
February	6,338	9,956	9,803	17,409	7,606	78%	175%
March	10,879	17,565	16,243	22,762	6,519	40%	109%
April	15,449	23,355	21,512	25,581	4,069	19%	66%
May	30,337	52,135	43,996	39,062	-4,934	-11%	29%
June	39,662	57,715	60,653	53,401	-7,252	-12%	35%
July	43,793	73,361	73,724	64,079	-9,645	-13%	46%
August	35,041	58,244	49,046	40,654	-8,392	-17%	16%
September	25,959	47,517	40,770	35,588	-5,182	-13%	37%
October	16,890	29,700	30,857	23,186	-7,671	-25%	37%
November	8,248	13,531	15,476	11,690	-3,786	-24%	42%
December	7,788	14,499	12,683	10,550	-2,133	-17%	35%
Boysen Total	250,959	412,744	393,839	368,516	-25,323	-6%	47%
Buffalo Bill							
January	3,623	5,431	4,428	3,366	-1,062	-24%	-7%
February	3,579	6,736	3,180	2,699	-481	-15%	-25%
March	4,879	8,795	5,008	4,189	-819	-16%	-14%
April	5,658	8,045	7,300	6,047	-1,253	-17%	7%
May	12,169	15,950	16,647	14,624	-2,024	-12%	20%
June	22,193	23,123	52,086	23,506	-28,580	-55%	6%
July	25,541	36,279	34,292	31,174	-3,119	-9%	22%
August	21,238	32,552	24,293	24,319	26	0%	15%
September	14,862	19,866	18,904	19,421	517	3%	31%
October	6,765	9,025	7,369	8,361	992	13%	24%
November	2,712	3,943	2,699	2,657	-42	-2%	-2%
December	2,504	3,528	2,402	2,862	460	19%	14%
Buffalo Bill Total	125,723	173,273	178,608	143,225	-35,383	-20%	14%

2022 Visitor Use By Site

	FIVE YEAR AVERAGE 2017-2021	2020 VISITATION	2021 VISITATION	2022 VISITATION	CHANGE FROM PRIOR YEAR	% CHANGE FROM PRIOR YEAR	% CHANGE FROM FIVE YEAR AVERAGE
Buffalo Bill - Dam Visitor Center							
January	NA	NA	NA	NA	NA	NA	NA
February	NA	NA	NA	NA	NA	NA	NA
March	NA	NA	NA	NA	NA	NA	NA
April	NA	NA	NA	NA	NA	NA	NA
May	6,673	1,622	7,860	6,770	-1,090	-14%	1%
June	15,818	8,802	18,734	18,702	-32	0%	18%
July	18,878	11,756	20,254	18,198	-2,056	-10%	-4%
August	15,958	11,510	19,153	17,083	-2,070	-11%	7%
September	10,101	7,726	9,132	12,614	3,482	38%	25%
October	NA	NA	NA	NA	NA	NA	NA
November	NA	NA	NA	NA	NA	NA	NA
December	NA	NA	NA	NA	NA	NA	NA
Buffalo Bill Dam Visitor Ctr Total	67,428	41,416	75,133	73,367	-1,766	-2%	9%
Curt Gowdy							
January	10,412	14,389	20,944	20,214	-730	-3%	94%
February	10,838	16,229	17,600	18,510	910	5%	71%
March	15,628	31,134	22,950	24,255	1,305	6%	55%
April	28,111	56,279	35,520	33,294	-2,226	-6%	18%
May	48,106	90,993	59,983	57,354	-2,629	-4%	19%
June	64,450	97,432	88,623	79,706	-8,917	-10%	24%
July	68,893	100,789	93,908	95,769	1,861	2%	39%
August	59,300	93,421	75,109	77,387	2,278	3%	31%
September	39,492	53,137	53,247	59,039	5,792	11%	49%
October	18,531	27,713	30,548	40,117	9,569	31%	116%
November	11,927	21,949	18,506	18,951	445	2%	59%
December	10,718	18,469	18,348	18,975	627	3%	77%
Curt Gowdy Total	386,406	621,934	535,286	543,571	8,285	2%	41%

2022 Visitor Use By Site

	FIVE YEAR AVERAGE 2017-2021	2020 VISITATION	2021 VISITATION	2022 VISITATION	CHANGE FROM PRIOR YEAR	% CHANGE FROM PRIOR YEAR	% CHANGE FROM FIVE YEAR AVERAGE
Edness Kimball Wilkins							
January	3,091	935	3,406	3,308	-98	-3%	7%
February	2,758	1,302	2,643	2,877	234	9%	4%
March	6,454	9,863	2,996	4,741	1,745	58%	-27%
April	6,323	5,960	5,940	5,143	-797	-13%	-19%
May	12,768	5,580	15,206	15,004	-202	-1%	18%
June	20,325	8,719	21,724	20,371	-1,354	-6%	0%
July	15,120	13,046	22,354	24,803	2,449	11%	64%
August	14,318	9,596	17,801	19,201	1,400	8%	34%
September	7,310	4,924	13,053	14,251	1,198	9%	95%
October	6,524	7,210	10,351	12,192	1,841	18%	87%
November	2,791	2,929	3,276	2,703	-573	-17%	-3%
December	2,425	2,968	2,860	2,356	-504	-18%	-3%
Edness Kimball Wilkins Total	100,207	73,032	121,610	126,949	5,339	4%	27%
Glendo							
January	8,329	8,521	12,053	16,207	4,154	34%	95%
February	8,186	7,619	11,508	25,176	13,668	119%	208%
March	12,444	16,850	9,707	14,512	4,805	49%	17%
April	26,570	40,396	25,203	35,367	10,164	40%	33%
May	77,510	81,968	134,964	66,784	-68,180	-51%	-14%
June	98,237	111,322	114,612	98,319	-16,293	-14%	0%
July	110,060	128,246	126,368	110,454	-15,914	-13%	0%
August	81,350	97,725	98,413	59,530	-38,883	-40%	-27%
September	46,952	61,242	58,218	40,579	-17,639	-30%	-14%
October	23,480	27,799	27,805	22,165	-5,640	-20%	-6%
November	14,567	17,574	23,104	12,112	-10,992	-48%	-17%
December	9,785	11,574	15,112	14,047	-1,065	-7%	44%
Glendo Total	517,470	610,836	657,067	515,252	-141,815	-22%	0%

2022 Visitor Use By Site

	FIVE YEAR AVERAGE 2017-2021	2020 VISITATION	2021 VISITATION	2022 VISITATION	CHANGE FROM PRIOR YEAR	% CHANGE FROM PRIOR YEAR	% CHANGE FROM FIVE YEAR AVERAGE
Guernsey							
January	4,589	5,344	6,797	7,936	1,139	17%	73%
February	3,521	4,815	5,147	6,717	1,570	31%	91%
March	5,178	7,383	7,395	7,381	-14	0%	43%
April	6,584	7,067	10,068	8,912	-1,156	-11%	35%
May	17,218	20,835	22,976	15,716	-7,260	-32%	-9%
June	26,449	29,342	41,476	27,663	-13,813	-33%	5%
July	27,671	30,138	40,301	24,634	-15,667	-39%	-11%
August	28,609	34,401	32,400	25,118	-7,282	-22%	-12%
September	14,407	22,158	18,197	15,785	-2,412	-13%	10%
October	7,863	10,691	10,468	7,059	-3,409	-33%	-10%
November	6,167	8,870	9,513	4,324	-5,189	-55%	-30%
December	4,435	6,128	6,156	3,380	-2,776	-45%	-24%
Guernsey Total	151,804	187,172	210,894	154,624	-56,270	-27%	2%
Hawk Springs							
January	454	258	382	348	-34	-9%	-23%
February	0	301	461	316	-145	-31%	#DIV/0!
March	750	100	1,022	788	-234	-23%	5%
April	2,163	2,519	1,754	1,004	-750	-43%	-54%
May	3,870	5,704	3,636	3,372	-264	-7%	-13%
June	5,652	6,501	6,495	4,910	-1,585	-24%	-13%
July	5,694	5,844	5,286	4,925	-361	-7%	-14%
August	3,392	4,374	3,094	2,981	-113	-4%	-12%
September	1,744	2,130	1,866	1,441	-425	-23%	-17%
October	838	971	1,073	830	-243	-23%	-1%
November	481	476	359	256	-103	-29%	-47%
December	284	273	239	260	21	9%	-8%
Hawk Springs Total	25,740	29,451	25,667	21,432	-4,235	-16%	-17%

2022 Visitor Use By Site

	FIVE YEAR AVERAGE 2017-2021	2020 VISITATION	2021 VISITATION	2022 VISITATION	CHANGE FROM PRIOR YEAR	% CHANGE FROM PRIOR YEAR	% CHANGE FROM FIVE YEAR AVERAGE
Hot Springs							
January	88,177	100,815	51,545	86,756	35,211	68%	-2%
February	93,139	104,828	65,222	85,140	19,918	31%	-9%
March	106,143	100,041	158,825	93,404	-65,421	-41%	-12%
April	128,890	125,196	163,597	95,400	-68,197	-42%	-26%
May	205,772	203,563	191,941	141,467	-50,474	-26%	-31%
June	232,322	234,305	201,753	175,736	-26,017	-13%	-24%
July	247,263	252,344	205,260	181,646	-23,614	-12%	-27%
August	237,400	232,980	252,472	212,784	-39,688	-16%	-10%
September	161,532	157,697	157,784	155,633	-2,151	-1%	-4%
October	150,220	149,298	139,709	138,958	-751	-1%	-7%
November	110,464	116,637	105,419	81,092	-24,327	-23%	-27%
December	100,381	106,442	63,772	73,134	9,362	15%	-27%
Hot Springs Total	1,861,704	1,884,146	1,757,299	1,521,150	-236,149	-13%	-18%
Keyhole							
January	7,339	8,528	13,815	8,255	-5,560	-40%	12%
February	3,753	4,573	4,726	4,588	-138	-3%	22%
March	5,884	7,831	7,158	6,185	-973	-14%	5%
April	11,901	20,719	12,967	6,264	-6,703	-52%	-47%
May	32,172	47,534	28,425	26,642	-1,783	-6%	-17%
June	60,596	65,565	57,281	47,302	-9,979	-17%	-22%
July	61,456	65,822	55,858	65,120	9,262	17%	6%
August	35,022	42,486	29,187	28,359	-828	-3%	-19%
September	18,834	20,153	19,137	18,395	-742	-4%	-2%
October	6,944	9,321	8,893	8,528	-365	-4%	23%
November	4,488	6,904	6,479	4,922	-1,557	-24%	10%
December	4,322	6,686	4,871	6,206	1,335	27%	44%
Keyhole Total	252,712	306,122	248,797	230,765	-18,032	-7%	-9%

2022 Visitor Use By Site

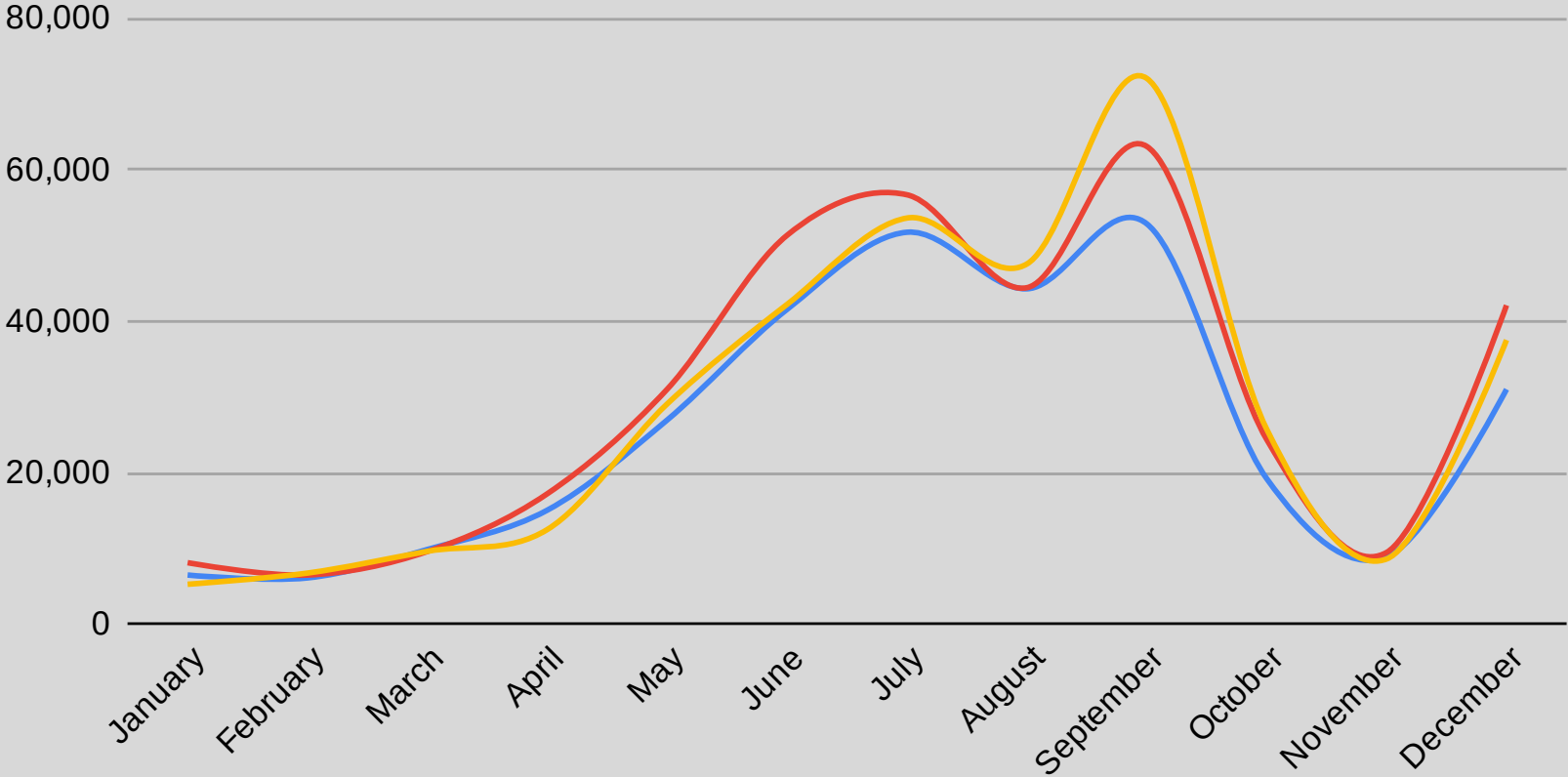
	FIVE YEAR AVERAGE 2017-2021	2020 VISITATION	2021 VISITATION	2022 VISITATION	CHANGE FROM PRIOR YEAR	% CHANGE FROM PRIOR YEAR	% CHANGE FROM FIVE YEAR AVERAGE
Medicine Lodge							
January	676	718	1,240	1,130	-110	-9%	67%
February	763	1,048	812	925	113	14%	21%
March	1,334	1,810	1,072	1,550	478	45%	16%
April	2,128	2,111	2,352	2,650	298	13%	25%
May	4,930	5,711	6,542	4,735	-1,808	-28%	-4%
June	6,726	7,223	8,955	6,382	-2,573	-29%	-5%
July	7,608	8,055	8,407	8,203	-204	-2%	8%
August	6,222	7,226	7,143	7,307	164	2%	17%
September	5,594	6,935	6,316	6,286	-30	0%	12%
October	5,557	6,719	6,577	5,822	-755	-11%	5%
November	1,611	2,189	1,674	2,499	825	49%	55%
December	1,065	1,502	1,548	1,779	231	15%	67%
Medicine Lodge SAS Total	44,213	51,247	52,638	49,267	-3,371	-6%	11%
Seminole							
January	405	308	587	529	-58	-10%	31%
February	391	435	517	431	-86	-17%	10%
March	541	1,136	578	517	-61	-11%	-4%
April	1,394	2,390	1,087	937	-150	-14%	-33%
May	3,543	5,416	4,910	3,388	-1,522	-31%	-4%
June	8,790	10,360	10,194	6,444	-3,750	-37%	-27%
July	13,374	16,880	14,633	11,969	-2,664	-18%	-11%
August	8,776	12,989	7,218	5,579	-1,639	-23%	-36%
September	3,801	6,324	3,915	4,111	196	5%	8%
October	945	2,003	1,132	1,534	402	36%	62%
November	346	570	401	265	-136	-34%	-23%
December	237	526	253	439	186	74%	85%
Seminole Total	42,347	59,337	45,425	36,143	-9,282	-20%	-15%

2022 Visitor Use By Site

	FIVE YEAR AVERAGE 2017-2021	2020 VISITATION	2021 VISITATION	2022 VISITATION	CHANGE FROM PRIOR YEAR	% CHANGE FROM PRIOR YEAR	% CHANGE FROM FIVE YEAR AVERAGE
Sinks Canyon							
January	15,103	15,240	19,010	16,691	-2,319	-12%	11%
February	13,665	15,277	15,626	15,762	136	1%	15%
March	19,407	22,368	19,955	18,201	-1,754	-9%	-6%
April	19,873	22,768	21,424	19,048	-2,376	-11%	-4%
May	52,504	79,131	73,312	61,548	-11,764	-16%	17%
June	86,817	104,293	141,105	105,936	-35,169	-25%	22%
July	80,792	95,959	102,405	128,024	25,619	25%	58%
August	73,035	109,322	99,689	93,296	-6,393	-6%	28%
September	59,858	82,893	80,112	75,958	-4,154	-5%	27%
October	40,217	61,511	56,536	62,348	5,812	10%	55%
November	24,659	50,367	23,034	26,301	3,267	14%	7%
December	22,574	40,361	16,482	12,081	-4,401	-27%	-46%
Sinks Canyon Total	508,504	699,490	668,690	635,194	-33,496	-5%	25%

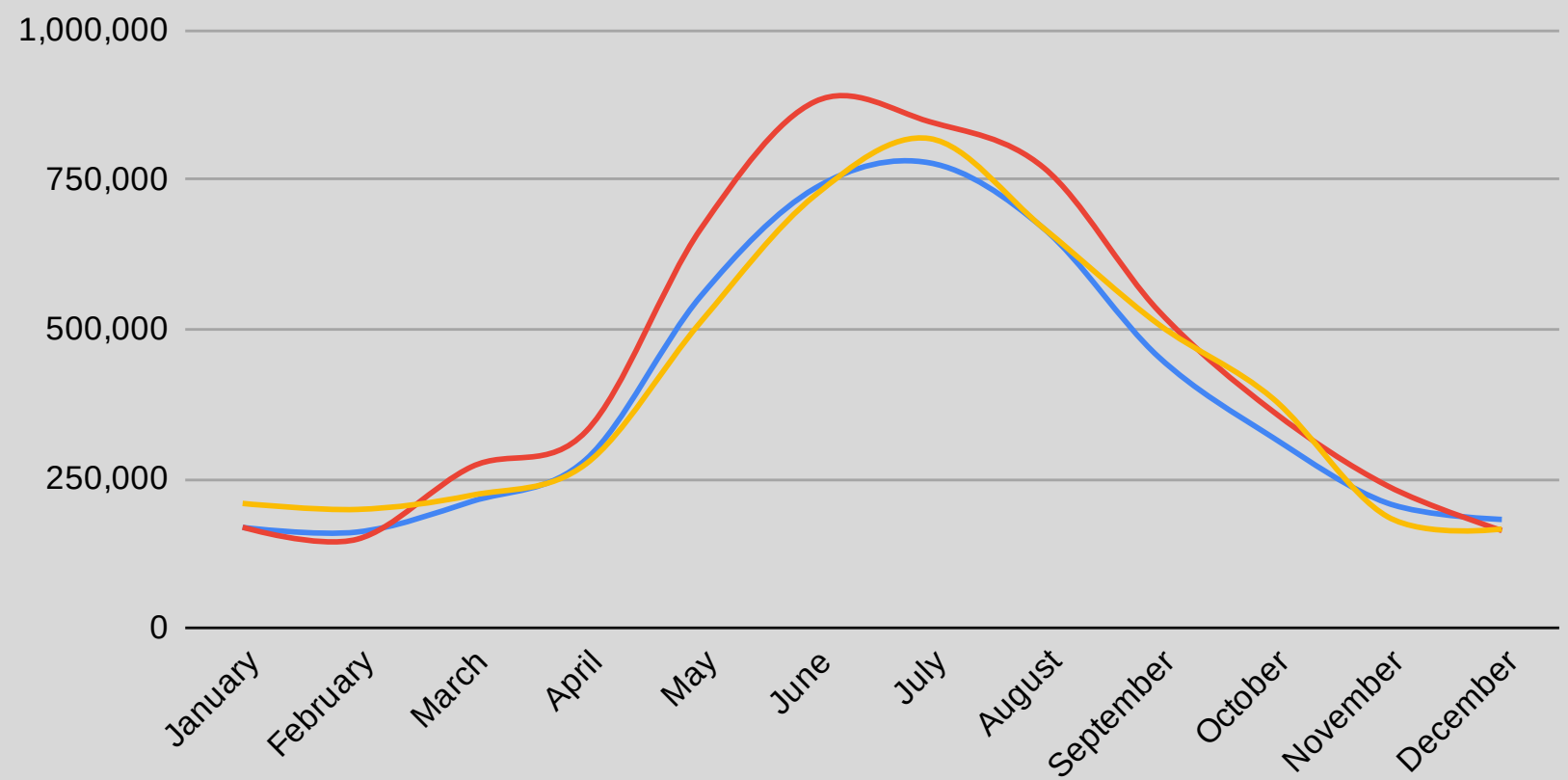
State Historic Sites Visitation

5 Year Avg. 2021 2022



State Parks Visitation

5 Year Avg. 2021 2022



State Parks and Historic Sites Visitation

