

NO SNOWMOBILING
Wildlife Winter Range

106°24'0"W

106°22'0"W

106°20'0"W

Trails on this map are intended for use by snowmobiles ONLY. Please refer to Wyoming ORV maps for trails open to ATV's and other ORV's. For more information call 307-777-6323 or visit a local Forest Service office.

42°44'0"N

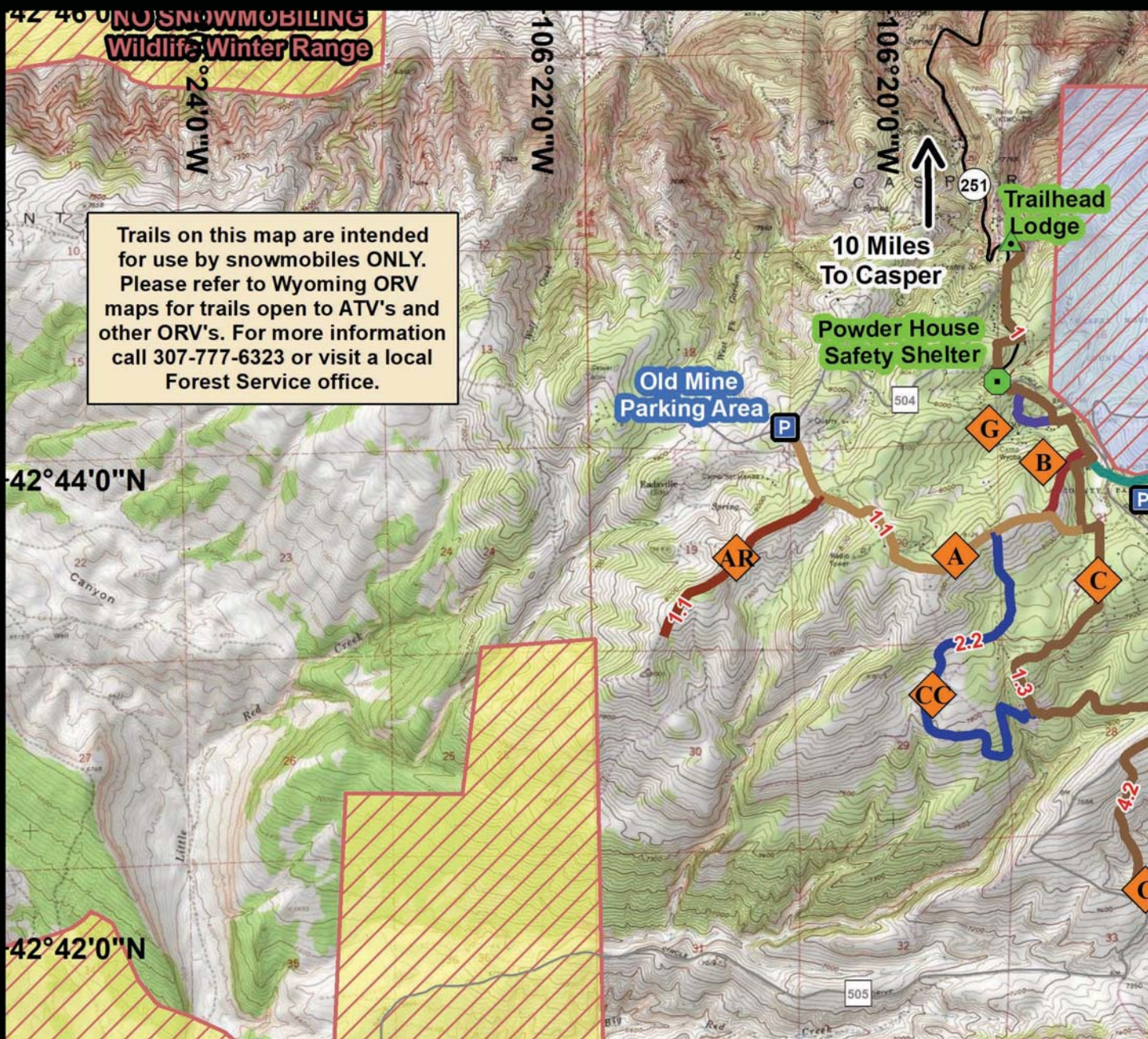
42°42'0"N

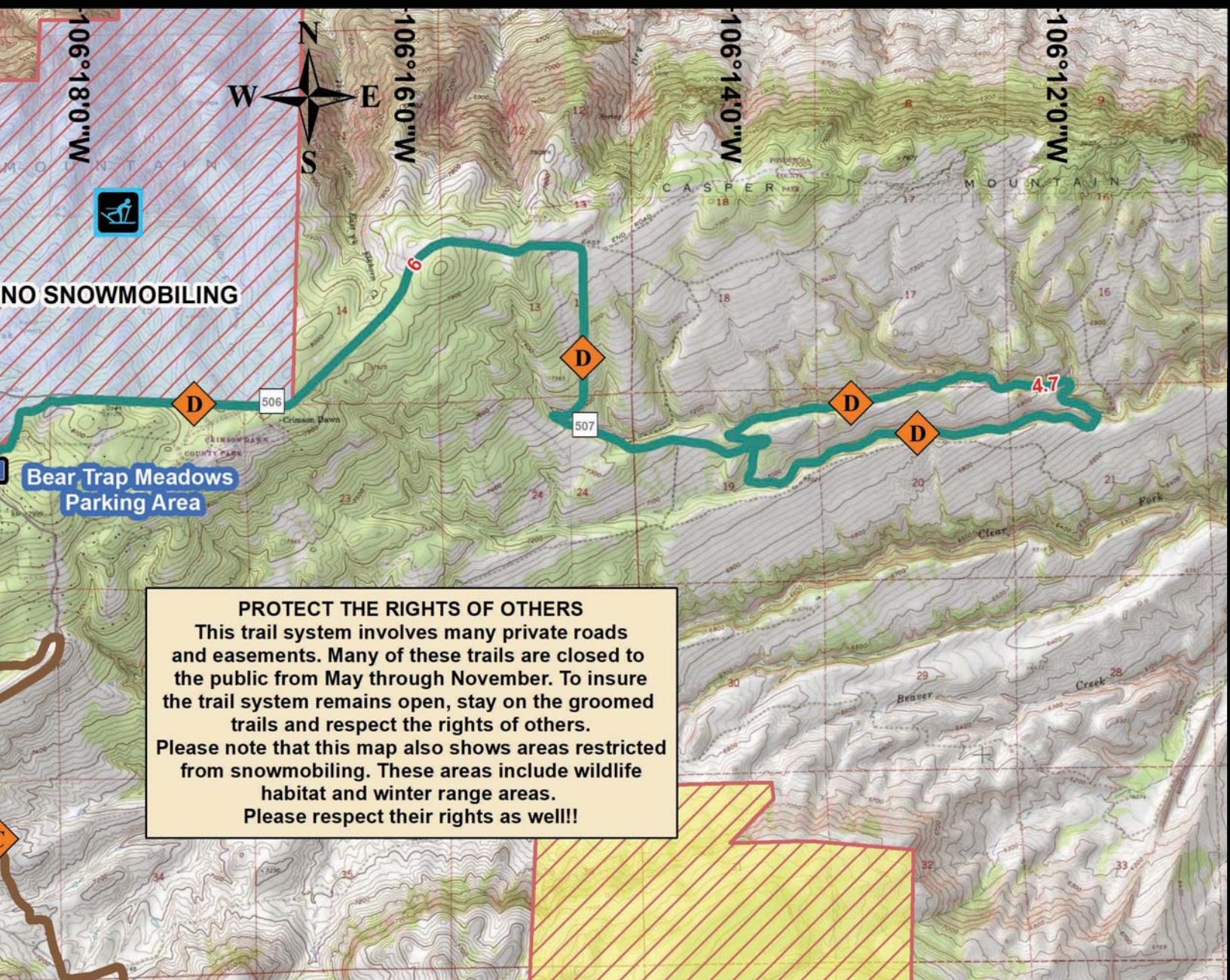
10 Miles
To Casper

Trailhead
Lodge

Powder House
Safety Shelter

Old Mine
Parking Area





PROTECT THE RIGHTS OF OTHERS

This trail system involves many private roads and easements. Many of these trails are closed to the public from May through November. To insure the trail system remains open, stay on the groomed trails and respect the rights of others. Please note that this map also shows areas restricted from snowmobiling. These areas include wildlife habitat and winter range areas. Please respect their rights as well!!



CASPER MOUNTAIN

This trail system is maintained through cooperative efforts of the Wyoming Department of State Parks & Cultural Resources, Division of State Parks, Historic Sites & Trails; the Bureau of Land Management; Natrona County and the local snowmobile club.

This system holds 32 miles of marked, groomed trails with international signage, including extensive ungroomed play areas. Complete facilities and services available in Casper. Snow depths can range from 1 foot to 3 feet.

Elevations: 7,000 feet to 7,800 feet.

Grooming Season: Mid-December through Mid-March, depending on snow conditions and funding
Season temperatures: +40° F to -20° F

TOTAL MILES: 32

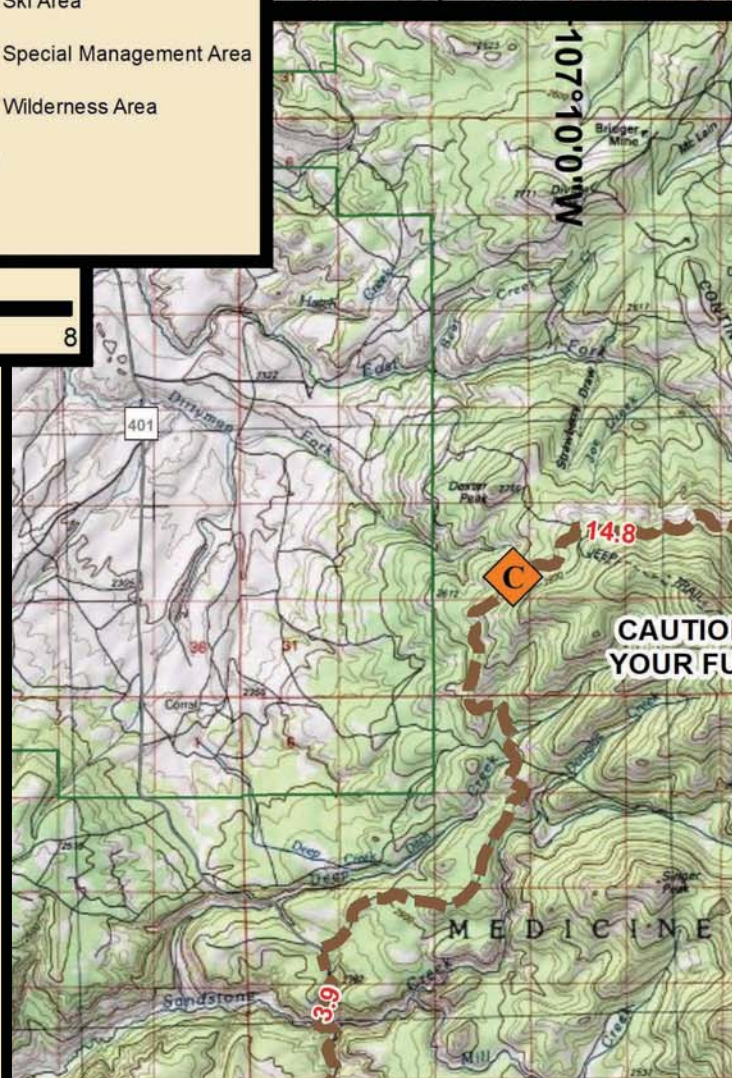


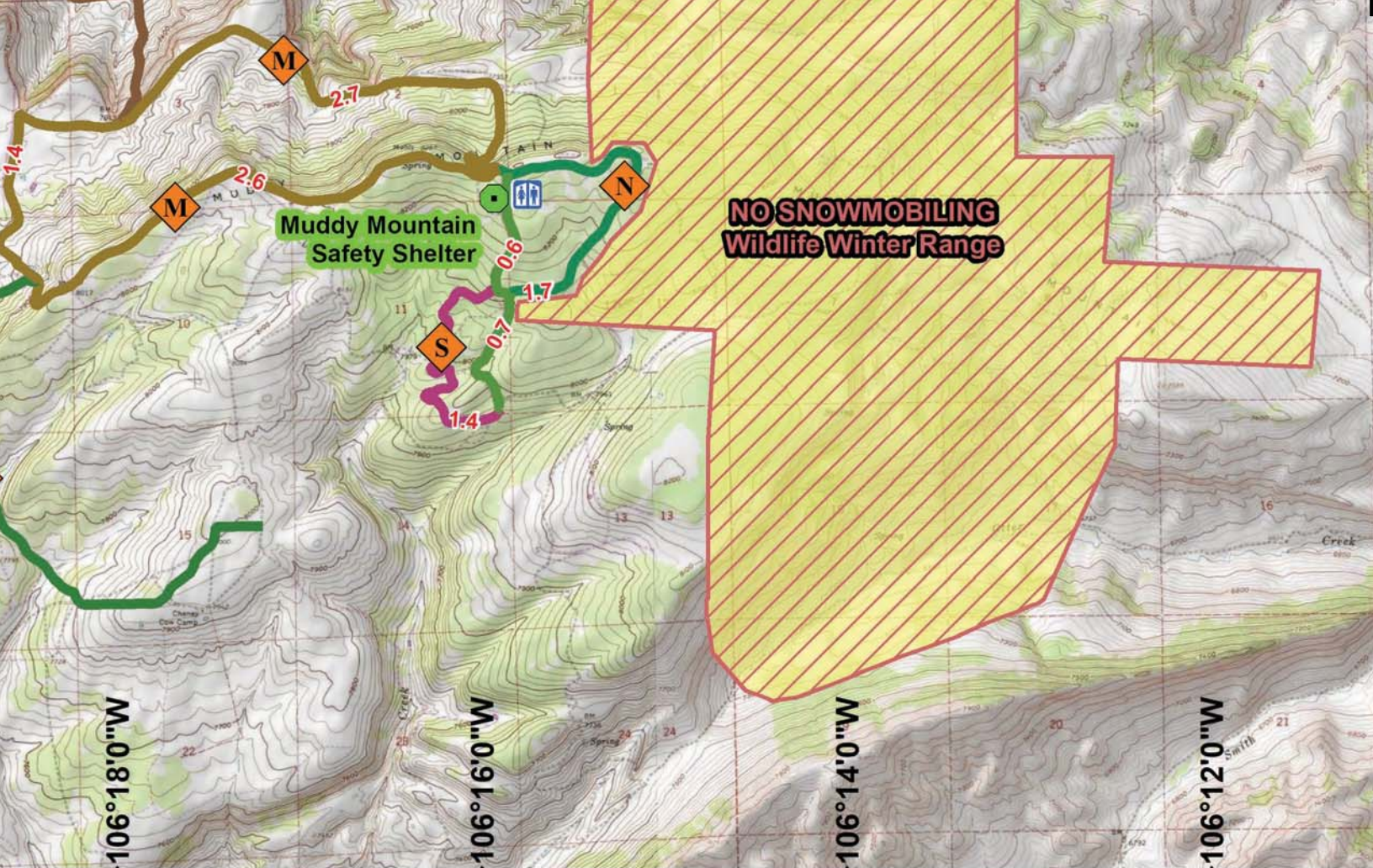
SIERRA MADRE MOUNTAINS SOUTH CENTRAL WYOMING

This trail system is maintained through cooperative efforts of the Wyoming Department of State Parks & Cultural Resources, Division of State Parks, Historic Sites & Trails; the U.S. Forest Service and the local snowmobile club.

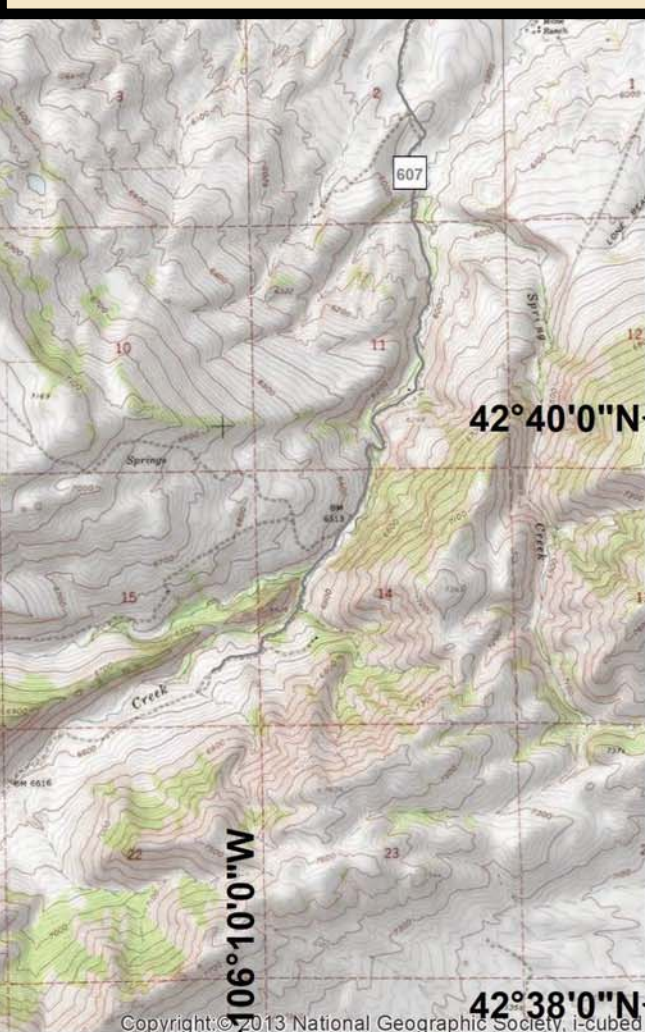
This system holds 49 miles of groomed and 99 miles of ungroomed trails. There are facilities and services at Encampment. Snow depths range from 2 feet to 8 feet.

Elevations: 7,000 feet to 10,000 feet
Grooming Season: Mid-December through Mid-March,
depending on snow conditions and funding
Season Temperatures: +30° F to -30° F





SOUTHEAST



Map Reference

The Trails on this map are intended for use by snowmobiles ONLY. Please refer to the WY ORV maps for trails open to ATV's and other ORV's. For more information visit www.wyotrails.com

Permits/User Fees

Resident and non-resident snowmobile user fees are required by Wyoming State Law. The fee is \$35.00 annually. These annual user fee revenues are used by the Snowmobile Trails Fund for trail grooming, parking area snow removal, and maintenance. Proof of payment is in the form of a decal which must be displayed on the exterior of the snowmobile.

These decals are available from licensed permit selling agents across the state and online. For purchasing information, a list of selling agent locations, and maps visit www.wyotrails.com

No Snowmobiling Areas

Please respect all NO SNOWMOBILING areas including, Wilderness, ski areas, and wildlife winter range. Respected access = Open access. Winter range provides wildlife a place to feed and conserve energy, which can help them survive through the harsh winter months. You can do your part by obeying closures and restrictions, observing wildlife from a distance, not following the wildlife, and enjoying the snow in the higher country where you are less likely to disturb wildlife.

More Information

For a directory of area businesses, parking areas, snowmobile dealers, riding tips and safety issues, safety shelters, snow and trail conditions, and other on trail attractions visit www.wyotrails.com



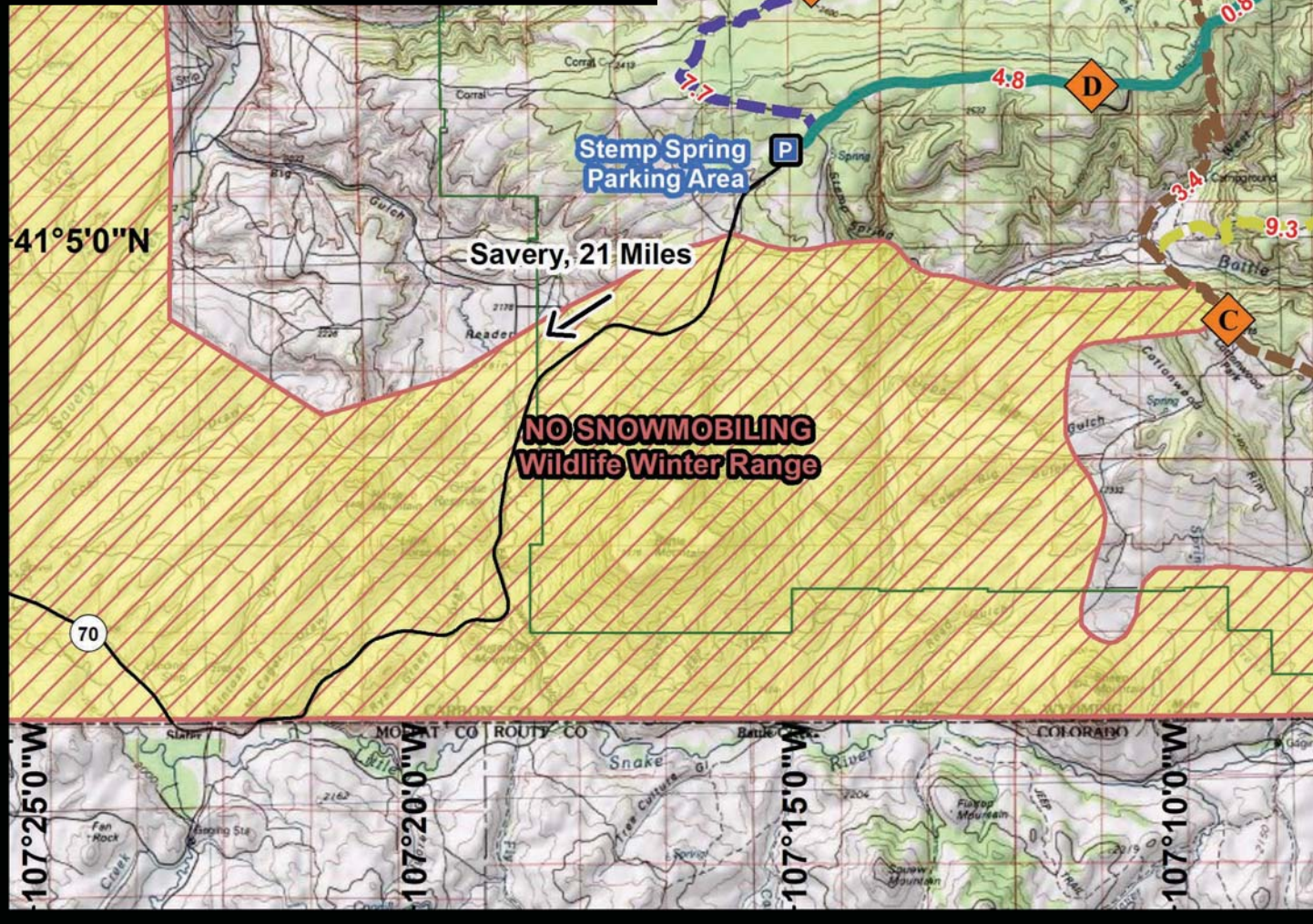
TOTAL MILES: 148
GROOMED: 49
UNGROOMED: 99

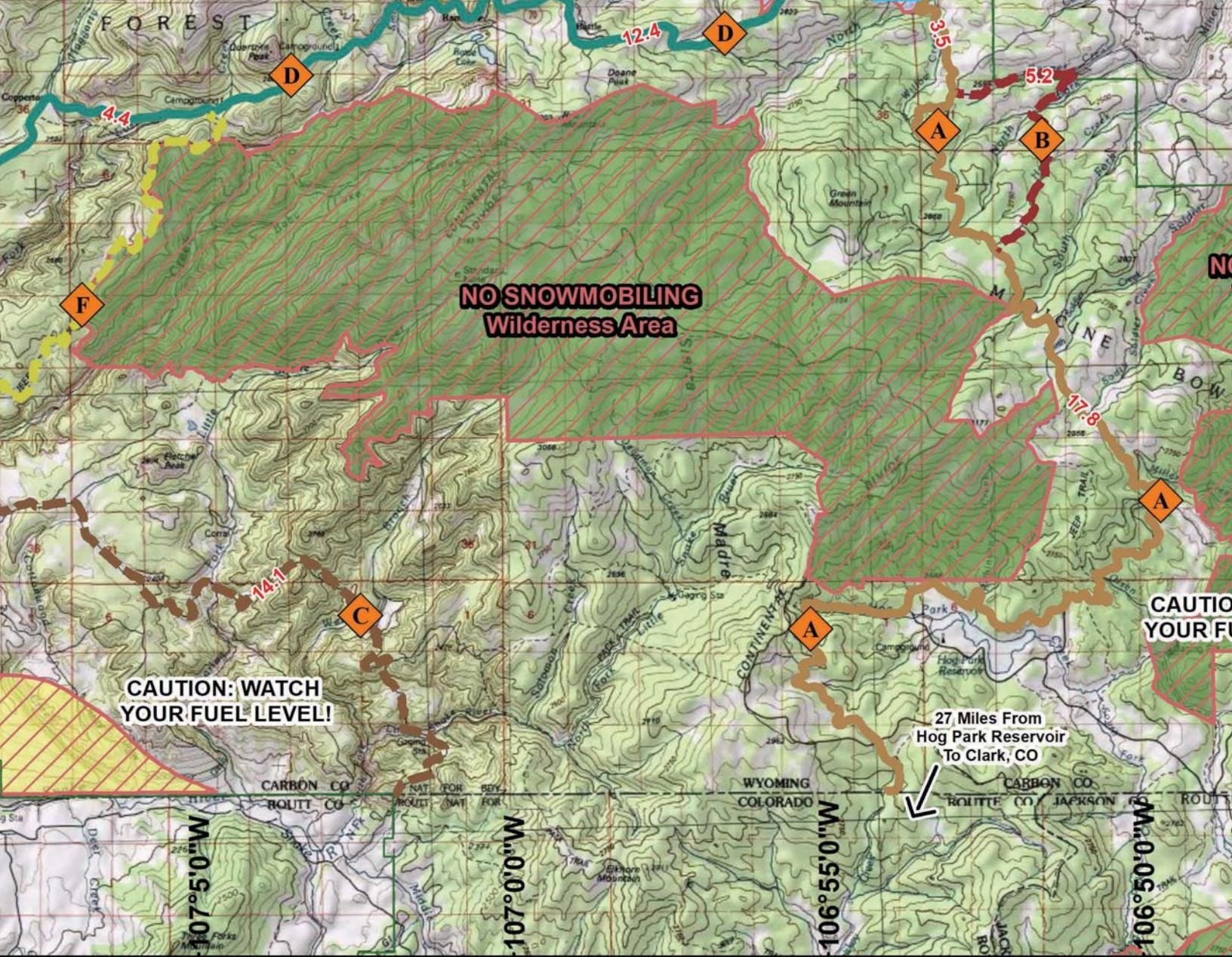


= Snowmobile Trail Blazer



= X-Country Ski Trail Blazer





**NO SNOWMOBILING
Wilderness Area**

**CAUTION: WATCH
YOUR FUEL LEVEL!**

27 Miles From
Hog Park Reservoir
To Clark, CO

**CAUTION
YOUR FUEL**



Avalanche Center

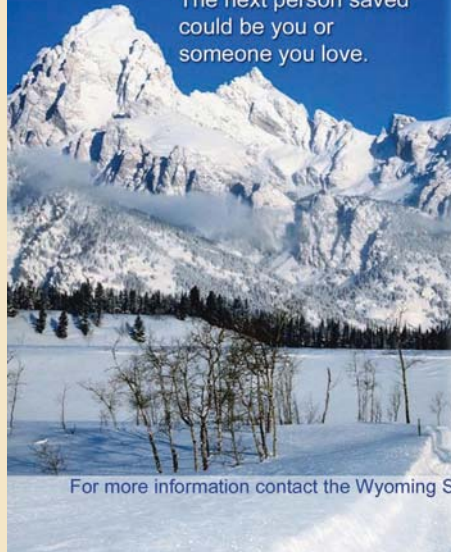


EDUCATION FOR SNOWMOBILERS



Wyoming Search and Rescue

The next person saved
could be you or
someone you love.



**Wyoming
Search and Rescue**
personnel conduct more
than 300 missions
annually for those who
become lost, stranded
or injured.

Even \$2 can help. . .

Donate to Search
and Rescue when you
purchase your fishing,
hunting, boating,
snowmobile and
ORV licenses.

For more information contact the Wyoming Search and Rescue Council
at (307) 777-4900 or visit
<http://hls.wyo.gov>