

💰 SITE FEES

Admission Fees

\$3.00 for Wyoming residents 18 and over

\$5.00 for non-residents 18 and over

FREE for under 18

✔ PLEASE REMEMBER

- Please try not to touch! Trail End is full of many beautiful things. Most are very delicate and easily damaged by the natural oils on your hands. By not handling the woodwork, wallcoverings and furnishings, you are helping us preserve these items for the future.
- Parents must keep small children in hand and under control at all times.
- No one under the age of 17 is allowed on the upper floors unless accompanied by an adult.
- Flash photography is not permitted.
- If a door is closed, please leave it closed.
- Please stay behind any rope or plexiglass barriers.
- Picnics are allowed on the grounds. Please remove all trash and bottles.
- Public restrooms and drinking fountains are located on the basement level.
- Visitors with mobility impairments are welcome to use the elevator to access the public restrooms in the basement as well as the exhibits on the upper floors.



WYOPARKS.STATE.WY.US



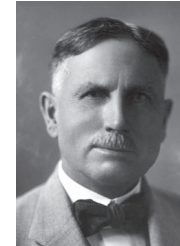
From its authentically furnished rooms to its finely manicured lawns, Trail End displays an elegantly different aspect of Wyoming's rich and colorful history.



Trail End State Historic Site is administered by the Division of State Parks, Historic Sites and Trails; Wyoming Department of State Parks and Cultural Resources.



👤 THE KENDRICKS



Trail End was the home of John Benjamin Kendrick, former Wyoming Governor and United States Senator. Born in Texas in 1857, Kendrick was orphaned at an early age and raised by relatives until he went out on his own at age fifteen. In 1879, Kendrick came to Wyoming Territory for the first time as a trail rider on a cattle drive. John Kendrick married 18-year-old Eula Wulfjen in 1891. For the next 18 years, they lived on the OW Ranch in southeastern Montana. This property was the start of what later became the Kendrick Cattle Company, a 210,000 acre collection of cattle ranches in northern Wyoming and southern Montana. While at the OW Ranch, the family's size doubled. Rosa-Maye (1897-1979) and Manville (1900-1992) were both born in Sheridan, but lived their early lives at the ranch.

🕒 HISTORY

Construction began on Trail End in 1908. After it was finished in 1913, the family had only a short time to enjoy their new home. John Kendrick was elected Governor of Wyoming in 1914 and the family moved to Cheyenne.

Two years later, he was chosen to serve in the United States Senate, an office he held until his death in 1933. During that time, Trail End was used primarily as a summer home. From 1933 to 1961, Eula Kendrick lived at Trail End with her son and his family. After her death, the others moved out and the house stood empty for seven years. In 1968, when it was about to be torn down, Trail End was purchased by the Sheridan County Historical Society. They opened the home to the public as a community museum. Ownership was transferred to the State of Wyoming in 1982.

📍 LOCATION AND HOURS

A Flemish-style house that once belonged to Wyoming Governor and United State Senator John B. Kendrick, Trail End is located at 400 Clarendon Avenue in Sheridan.

Summer hours (June – August)

9 a.m. to 6 p.m. daily

Open Memorial Day, Independence Day and Labor Day (please call for hours)

Winter hours (September – May)

Please call for current schedule.

(307) 674-4589 or www.trailend.org

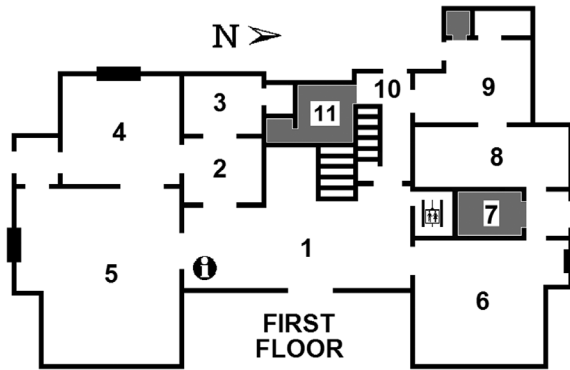
🌟 PLEASE NOTE

Trail End is set up for self-guided tours. Guided group tours (including school groups and bus tours) are available by appointment only and must be scheduled at least three weeks in advance.

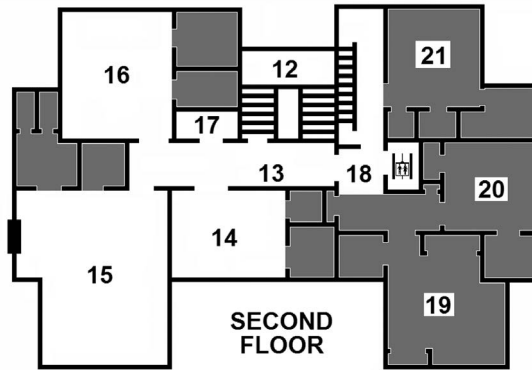
SELF-GUIDED TOUR HIGHLIGHTS

SHADED AREAS ARE NOT OPEN TO THE PUBLIC

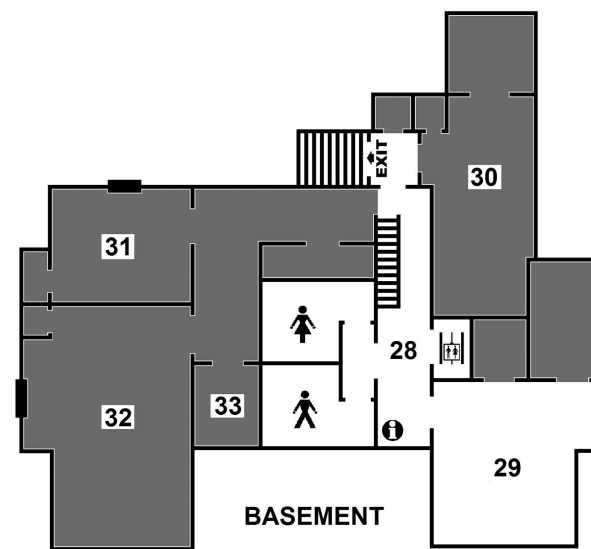
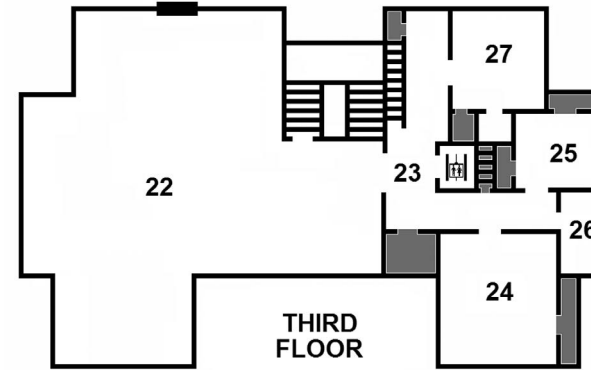
THE GROUNDS



- 1 - Foyer** Hand-painted ceiling panels, oak wood-work, liquor cabinet, elevator
- 2 - Cloak Room** Intercom, coat closets
- 3 - Powder Room** Porcelain double pedestal sink, German silver fixtures, original plumbing
- 4 - Library** Quarter-sawn Golden Oak woodwork, stained glass windows, music box
- 5 - Drawing Room** Silk wall coverings, piano-finish Honduran mahogany woodwork
- 6 - Dining Room** Italian marble fireplace, rose-silver chandelier
- 7 - Walk-In Vault** Combination safe, locking interior cabinets
- 8 - Butler's Pantry** Butternut cabinets and drawers, German silver sink, icebox
- 9 - Kitchen** Wood/coal cookstove, porcelain sink, built-in spice cabinet, pantry closet
- 10 - Back Hallway** Intercom, fusebox, firehose, annunciator, vault alarm, servants' stairs
- 11 - Maids' Breakfast Room** Storage areas, half-bath, oval stained glass window
- 12 - Landing** Replication wallpaper, stained glass windows, hand-painted ceiling canvas
- 13 - Portrait Gallery** Kendrick family friends and relatives



- 14 - Manville's Bedroom** Navajo-style wall paintings, Arts & Crafts light fixtures
- 15 - Master Bedroom** Original Circassian walnut furnishings, redecorated in the 1930s
- 16 - Rosa-Maye's Bedroom** Hand-tinted walls, Victorian-style lights, Berkey & Gay furnishings
- 17 - Maid's Closet** Hoses and nozzles for built-in stationary vacuum system, fusebox
- 18 - Guest Wing** Elevator, servants' stairs, enclosed west balcony
- 19-21 - Guest Bedrooms** Staff offices
- 22 - Ballroom** Tiffany-styled chandeliers, musicians' loft
- 23 - Staff Hall** Elevator, intercom, laundry chute, dumbwaiter, firehose, servants' stairs
- 24 - Cook's Bedroom** Built-in sink, cupboards under the eaves
- 25 - Maid's Bedroom** Stained glass window, built-in sink with mirror
- 26 - Staff Bath** Half-arch windows, Vermont marble trim
- 27 - Housekeeper's Bedroom** "Please Touch" exhibits, photo display
- 28 - Basement Hallway** Elevator, public restrooms, drinking fountain, brochure rack



- 29 - Laundry Room** Stationary vacuum cleaner motor, ranch exhibit, laundry facilities
- 30 - Furnace Room** Twin boilers, incinerator, coal bin
- 31 - Chauffeur's Bedroom** Fireplace, private bath
- 32 - Billiard Room** Fireplace, cedar-lined closets
- 33 - Paint Closet** Storage shelves

In case of emergency, do not use elevator.
Take stairs to nearest exit.

Trail End's 3.8 acres of groomed grounds contain a sunken rose garden, English sundial, fruit orchard, lawn tennis court (north of the Carriage House), circular back driveway with original clothesline/drying yard, and a wide variety of trees and bushes, both native and exotic.

Finished in 1910, the Carriage House served as the Kendricks' home during construction of the mansion. In 1979, the structure was leased to the Sheridan Civic Theatre Guild, which converted the space into an 88-seat community theater. Phone (307) 672-9886 for information on upcoming Carriage House events.

FACTS & FIGURES

- ◆ Trail End is the only known example of Flemish Revival architecture in Wyoming
- ◆ Most of the items in Trail End today are original to the house
- ◆ Trail End has twelve full or partial bathrooms
- ◆ Trail End cost \$164,000 to build; a normal-sized home in 1913 cost about \$4,000
- ◆ Building materials were shipped to Sheridan by rail from all over the United States and hauled up the hill by horse-drawn wagons:
 - Limestone from Indiana
 - Roofing tile from Missouri
 - Brick from Kansas
 - Granite from Montana
 - Woodwork from Michigan
 - Window screens from Maine
 - Stained glass from New York
 - Marble from Vermont
- ◆ In the winter, Trail End's twin boilers could burn up to a ton of coal a day
- ◆ Trail End's architect was Glenn Charles McAlister of Billings, Montana